

MARCH

Near Drive-in Theatre • Ample Parking Space

choice of popular

OS ... AT

MSV

WGS!

largest retail ware-

ARMSTRONG, TILE TEX

TILE

MUCH AS 50%

can install your own floor!

PHALT TILE
SHOWS YOU
ete selection of
ROBERTS FRAMES

**BORDERS • EDGING
OR PLAIN COLORS**
originality for as low as



PLEASE
bring your room

measurements
with you

of your home!
TURSDAYS TO 9

ASPHALT TILE exclusively
TE 4 AT MACKAY AVE.
PARANUS
FLOORING CO.

Simple Parking Space

U. S. Department of Labor Recommending U. C. Changes Previously Supported By State Chamber

NEWARK — The two-year campaign by the New Jersey State Chamber of Commerce to moderate and improve the state's unemployment compensation system has been materially strengthened by a recent U. S. Department of Labor letter to all State Employment Security Agencies urging the adoption of many of the principles for which the State Chamber has been fighting.

According to the State Chamber's Social Security Department, the letter sent by Director of the Bureau of Employment Security Robert C. Goodwin recommending certain basic changes in procedure for State Employment Security Agencies is in essence an endorsement of many of the proposals contained in Senate Bill 146, which the State Chamber is supporting. Similar measures were proposed in the State Legislature last year and received State Chamber support.

One of the major proposals in the U. S. C. Law which has received the fullest endorsement of the State Chamber is the use of "quarterly wage reporting" instead of "quarterly wage reporting." The State Chamber has

method of wage reporting. Goodwin's letter said that such a system opens up "wider avenues for progress in improving the benefit structure."

"(Quarterly wage reporting) means that wage and employment information would be submitted by the employer to the local state employment office only once a quarter," Goodwin's letter said. "This method 'has not been practicable because a quarterly wage report must be processed and maintained at a central point. Requesting reports removes this obstacle, since it does not require accumulation of any wage data until a notice of unemployment is filed. The local office may be given the responsibility for sending out, receiving and controlling wage reporting information.'"

The Bureau of Employment Security, through Goodwin's letter, points out in detail many of the advantages of quarterly wage reporting. Under the present U. S. C. Law this is not a more precise and realistic

Fashion Has Hall of Fame



RABERALL has its Hall of Fame. It is a place where the most famous of the world's designers of men's suits are displayed. It is a place where the most famous of the world's designers of men's suits are displayed. It is a place where the most famous of the world's designers of men's suits are displayed.

Announcement...

Shaplo Bakery of 204 Diamond Bridge Ave. will be under new management on Mar. 12.

Wozney Quality Bakery Complete line of quality baked bread, cake, and pastry. Specializing in wedding, birthday and party cakes made to order.

Wozney Quality Bakery 204 Diamond Bridge Ave. Hawthorne, N. J.

WHERE INSURED SAVINGS

Alexander Hamilton Savings & Loan Association 138 Washington St. Paterson, N. J. City Hall Bldg. 2-4615

NEW JERSEY'S 12th mile coastline is expected to attract thousands of "beach bums" who prefer salt to fresh-water fishing. A feature attraction of ocean, bay and inlet fishing is that no license is required.

Individual and party fishing boats accommodating up to 25 or 30 people will be available during the spring and summer months. Fishing facilities may be obtained at Long Branch Asylum.

Economic Development

Annually the State Hatchery, at Hackensack distributes more than 400,000 legal-size brook, brown and rainbow trout. Included among the more than 600,000 fish stocked in New Jersey's more than 500 lakes and ponds are largemouth bass, bluegills, perch, catfish, catfish, pickerel and white perch.

State hatcheries are expected to stock the Pompton Lakes in Passaic County with bass, bluegills and pickerel. This summer, vacationers will find pickerel, bass, and pan fish at Budd Lake, Morris County. Anglers who like river fishing may try the upper sections of the Delaware River, which usually have abundant wall-eyed pike and bass. Bass fishing also may be found along the Raritan River from High Bridge in Hunterdon County to Neshanic in Somerset County.

Over a dozen state forests and parks contain fishing facilities and may have limited cabin and camp accommodations. A variety of picnic areas have been provided; some contain tables, benches, fireplaces, and drinking water. Some of the best freshwater fishing in the State may be found at the hatchery-stocked ponds and streams located in parks.

Washington News

THE POPULARITY OF COFFEE continues to hold first rank as the international beverage and enjoys increasing favor with people in all walks of life. It has become the principal beverage at meal times and for social use at other hours. For instance, "black annals," as dining car waiters refer to tiny cups of before-breakfast coffee, have won popularity in homes at the twilight period of congeniality and talk before dinner.

The popularity of coffee has significance even beyond its use as a beverage. It also means economic strength for South and Central American countries depending largely on the growth and sale of coffee. The item is the field of international trade. The income accruing to the coffee-producing countries largely finds its way back to the United States for purchases of manifold things needed by the people of those countries. This flow of trade makes it possible for the coffee countries to maintain for themselves a high degree of stability.

Perhaps no single commodity used by so many people is grown and transported under such difficult conditions as is the case with coffee. It is usually grown in hilly country well away from the seacoast. The trees which are nursed from seedlings require constant attention. At peak growth each tree yields annually less than two pounds of coffee. Even the drying methods, which require exposure to the bright tropical sun and storing of the coffee beans at night to avoid dew and rain, add to the tremendous and expensive handwork in producing coffee.

Show Inspires Hat

The Chicago auto show served as the inspiration for this original "hat" design. The hat was designed around a miniature, international pick-up truck, a replica of one on display in the show. It was worn by Gladys Layman at the show. Multi-colored streamers surrounded the crown of the green felt hat. Green velvet lined the crown and the brim.

early days down to the present period of slumps, by far the largest supplier of tea. In a recent issue of General Foods Stockholder News, President Igleheart said that he believed that Congress, and the farm along the line will pitch in and help management whenever they can. "The National Tea Party," he said, "is a movement to help in the management of the problems that management has to solve. The National Tea Party is a movement to help in the management of the problems that management has to solve. The National Tea Party is a movement to help in the management of the problems that management has to solve."

General Foods is proud that members of its staff have already been called to help in the mobilizing of the Nation's strength and ready with a bow for those men and women of the food industry who have joined the military services.

Chrysler

FEEL THE MIGHT

NEW YORKER NEWPORT

in the handsomest, best-riding new CHRYSLERS ever built!

Public Service

The annual report of Public Service Electric and Gas Company for 1950, which is now being distributed to stockholders, shows that the company's net income in 1950 was \$20,855,014 compared with \$21,085,062 in 1949.

Operating revenues in 1950 amounted to \$165,545,312 compared with \$171,547,297 in 1949. Operating expenses, maintenance, depreciation and taxes were \$154,689,794 this year compared with \$141,693,429 in 1949. Other income totaled \$20,819 and income deductions amounted to \$1,244,325 in 1950. The earnings for Common Stock and Gas Company in 1950 amounted to \$11,705,497, or the equivalent of \$2.05 per share of Common Stock outstanding Dec. 31, 1950.

Service Electric had a marked effect on the earnings of Public Service Electric and Gas Company in 1950, President George E. Blake points out in the report. The electric utility's earnings were higher than in the past due to higher wages, an increase in Federal income taxes and the

SAVE TIME

Our Ford cars keep up in your business. They're fast, reliable and economical. They'll help you get the most out of your time.

SAVE MONEY

You save money too. Our new Ford cars are built to last. They're built to give you the most mileage for your money.

FORD SERVICE KEEPS FORDS YOUNG

SAVE YOUR CAR

Our Ford cars keep up in your business. They're fast, reliable and economical. They'll help you get the most out of your time.

FORD DEALERS KNOW FORDS BEST!

We Do Printing of All Kinds

Tickets
Billheads
Programs
Envelopes
Statements
Letterheads
Index Cards
Record Blanks
Business Cards
Circular Letters
Special Ruling

CALL

The Hawthorne Press

Phone Hawthorne 7-3330

N. J. Game Comm. Reducing 1,400 Miles of Streams

PRETONTON—With anglers anticipating the April opening of the fresh water fishing season, the New Jersey Fish and Game Commission is readying the State's inland fishing facilities with an eye to attracting thousands of anglers as well as springtime vacationers to the Garden State's more than 1,400 miles of trout streams, according to officials of the New Jersey Department of Conservation.

HEALTH HINTS

SUDDEN DEATH IN HEART DISEASE

Sudden death from heart disease is contrary to the popular conception, a relatively uncommon event. Since this termination is so spectacular and impressive, it easily finds its way into the columns of the press, and leads people to believe that an abrupt ending is to be expected by anyone having heart disease.

COOL CLEAR TO THE FLOOR!

Coolerator

HOLDS MORE FOOD—TAKES LESS SPACE—ALL SAFE COLD TOP TO BASE—AND FRONT TO BACK!

\$209.95

It's an entirely new kind of refrigerator—the only refrigerator that's bigger on the inside than it looks on the outside. Only 2 feet wide yet it gives you a full 7 1/2 cu. ft. of the most usable capacity you've ever seen. Built-In Freezer stores over 20 lbs. of frozen 28 lb. ice cubes—and there's lots of full bottle space. Dependability backed by Coolerator's 5-Year Warranty. See this big, low-priced Space-Thrifty Coolerator with the Modern Full-Length Door today!

Barney's

55 MAIN ST. OPEN THURS. EYES. TILL 9 PATERSON

Barney's

55 MAIN ST. OPEN THURS. EYES. TILL 9 PATERSON

Barney's

55 MAIN ST. OPEN THURS. EYES. TILL 9 PATERSON

Barney's

55 MAIN ST. OPEN THURS. EYES. TILL 9 PATERSON

Faber Plumbing and Heating Co.

Oil Burner Heating Systems Installed 27 Special Bids Available

KEN AIMONE

Insurance Agency 50 MAY STREET HAWTHORNE, N. J. Hawthorne 7-2465

In New York

400 ROOMS—400 GUESTS

HOTEL President

200 DIAMOND BRIDGE AVENUE HAWTHORNE, N. J.

Penn's Premium Export Beer

245 Case of 24 Steinies

DIAMOND LIQUORS

203 DIAMOND BRIDGE AVENUE HAWTHORNE, N. J.

Barney's

55 MAIN ST. OPEN THURS. EYES. TILL 9 PATERSON

Barney's

55 MAIN ST. OPEN THURS. EYES. TILL 9 PATERSON

Wozney Quality Bakery

Complete line of quality baked bread, cake, and pastry. Specializing in wedding, birthday and party cakes made to order.

Wozney Quality Bakery

204 Diamond Bridge Ave. Hawthorne, N. J.

Faber Plumbing and Heating Co.

Oil Burner Heating Systems Installed 27 Special Bids Available

KEN AIMONE

Insurance Agency 50 MAY STREET HAWTHORNE, N. J. Hawthorne 7-2465

In New York

400 ROOMS—400 GUESTS

HOTEL President

200 DIAMOND BRIDGE AVENUE HAWTHORNE, N. J.

Penn's Premium Export Beer

245 Case of 24 Steinies

DIAMOND LIQUORS

203 DIAMOND BRIDGE AVENUE HAWTHORNE, N. J.

Barney's

55 MAIN ST. OPEN THURS. EYES. TILL 9 PATERSON

Barney's

55 MAIN ST. OPEN THURS. EYES. TILL 9 PATERSON

Chrysler

FEEL THE MIGHT

NEW YORKER NEWPORT

in the handsomest, best-riding new CHRYSLERS ever built!

Chrysler FirePower

Finest engine ever put in an automobile

Chrysler

FEEL THE MIGHT

NEW YORKER NEWPORT

in the handsomest, best-riding new CHRYSLERS ever built!

Chrysler FirePower

Finest engine ever put in an automobile

Chrysler

FEEL THE MIGHT

NEW YORKER NEWPORT

in the handsomest, best-riding new CHRYSLERS ever built!

Chrysler FirePower

Finest engine ever put in an automobile

Chrysler

FEEL THE MIGHT

NEW YORKER NEWPORT

in the handsomest, best-riding new CHRYSLERS ever built!

Chrysler FirePower

Finest engine ever put in an automobile

Chrysler

FEEL THE MIGHT

NEW YORKER NEWPORT

in the handsomest, best-riding new CHRYSLERS ever built!

Chrysler FirePower

Finest engine ever put in an automobile

Chrysler

FEEL THE MIGHT

NEW YORKER NEWPORT

in the handsomest, best-riding new CHRYSLERS ever built!

Chrysler FirePower

Finest engine ever put in an automobile

Chrysler

FEEL THE MIGHT

NEW YORKER NEWPORT

in the handsomest, best-riding new CHRYSLERS ever built!

Chrysler FirePower

Finest engine ever put in an automobile

Chrysler

FEEL THE MIGHT

NEW YORKER NEWPORT

in the handsomest, best-riding new CHRYSLERS ever built!

Chrysler FirePower

Finest engine ever put in an automobile

"A good breakfast doesn't necessarily mean a big breakfast. An egg, fruit, a piece of toast, maybe a glass of milk and a coffee

may be a glass of milk or a cup of coffee—those items add to a ideal breakfast for your looks; no matter what your age or position, age."

Fred W. Meyer

(Continued from Page 1)

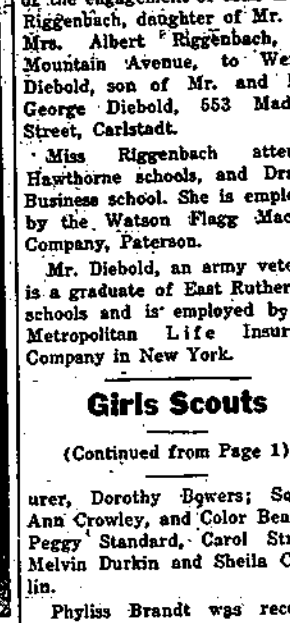
Hawthorne; his grandmother Mrs. Werner Schwarzenbach Paterson; one aunt, Mrs. Elsie Coral of Haledon, and several other aunts, uncles and cousins.

(Continued from Page 1)

Acme Markets
Owned and Operated By
The American Stores Company

46 Diamond Bridge Ave., Hawthorne

Heidi Klum Engaged to Wed



Leaders of Troop 82 are Florence Little Miss Cora Brech-Leaky and Mrs. Frances Buchanan. Mrs. Mabel Leaky is the troop committee member.

Honorees at the door were Dorothy De Korte, Janssen, Helena De Bruin Evelyn Withelm.

Pianists for the ceremony Joan Forman, Joan Emery and Mary Ann Brandt.

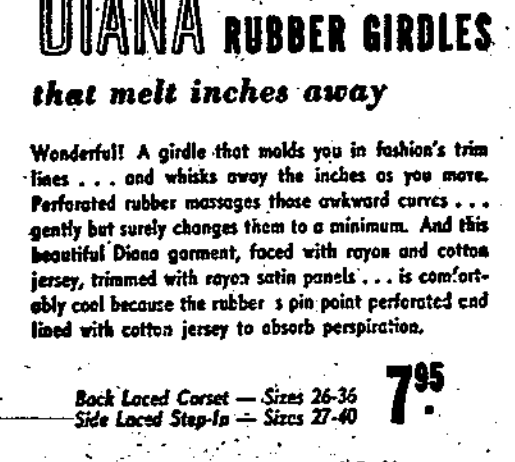
Philadelpha

(Continued From Page 1.)

ger Overture and will then conduct a performance of Schubert's "Unfinished" Symphony No. 8 minor. The concert will conclude with a performance of Strauss' celebrated Rose

Lovers of the Moscorfe who will visit the Moscorfe on Monday afternoon, March 18, for the fourth concert in the Foundation's Master Piano series, will hear Solomon, the singularly gifted English pianist, in a diversified program which will include Beethoven's Sonata in C minor, opus No. 111, and the Chopin Sonata, opus No. 35, in B minor. It will be the first appearance in New Jersey of this formidable keyboard artist.

BERNARDINO



OPEN THURSDAYS TO 9 P. M.

WASHINGTON & VAN HOUTEN STS. PATERSON

by Grand Union people give you
SERVICE that makes shopping a pleasure.

- Scientifically designed, self-service departments such as the Food-O-Mat and Meateries are SERVICES that make shopping quicker and easier.
- Well trained friends, cashiers, tolltories, and housewares, prominently displayed gives you a SERVICE that saves you time and effort — everything you need under one roof.
- Grand Union's low price policy is a SERVICE that gives you bigger savings on everything you buy at Grand Union.

Have You Tried
GRAND UNION
 Old Fashioned-Country Style
Pure Pork
Sausage

Made From
 Choice Lean, Pure Pork
 Excludes Ground
 Chisel Steaks
 1 lb. roll
 Low Moisture
 Sausage
 Many Delicious
 Uses
55¢

FRESH FISH
 Available in Service Dept.

Haddock Fillets 49¢
Cod Steaks 35¢
Smelts 33¢
Shrimp 83¢

RECIPE'S
QUICK-FROZEN

Available in Self-Service Dept.
Pork Fillets 43¢
Cod Select Fillets 39¢
Sworloffish 63¢

Whole or Half

Legs of Lamb
 Fresh Eastern Shore
Broilers and Fryers
 Ready-to-Cook 55¢
 Regular Dressed 65¢

Chickens
 Roasting 49¢
 1/2 lb. Average
Ducklings
 Ready-to-Cook 67¢
 Regular Dressed 79¢

DELICIOUS ECONOMY MEAT
 Sliced Ham-Tierpoint
Pork Liver 43¢
Sliced Bacon 37¢

From Delicious Economy Meat Dept.
Best Ground Beef 65¢
Shinless Frankfurters 16¢

Delicate Natural Flavor

Allseason Oleomargarine Colored 4 1/2 lbs. pkgs. **36¢**

Few Odors, Economical Meats

Mueller's Macaroni 2 1lb. pkgs. **29¢**

Delicious - Hearty - Satisfying

Campbell's Beans 1 lb. cans **34¢**

The Children's Choice

Peter Pan Peanut Butter 12 oz. jars **29¢**

Kitchen Garden

Salad Dressing 1 pt. **25¢**

Kitchen Garden Everts Frostings

Home Style Peaches No. 2 1/2 can **39¢**

It's Extra Good

Clorox quart bot. **15¢**

With Pork

For Perfect Salads

Lasagne, Shaggy Noodles

Sea Oil 4 1/2 lbs. pkgs. **45¢**

Bag Food 2 1/2 lbs. pkgs. **27¢**

Vanilla Compound 1 1/2 lbs. pkgs. **27¢**

Egg Coloring 3 pkts. **25¢**

Dried Prunes 1 1/2 lbs. pkgs. **24¢**

Unglazed 2 1/2 lbs. pkgs. **19¢**

Vanilla Cakes 3 pkts. **23¢**

Vanilla Extract 1 1/2 lbs. pkgs. **28¢**

Vanilla Sugar 1 1/2 lbs. pkgs. **29¢**

Real Butter 1 1/2 lbs. pkgs. **39¢**

1/2 lb. pkgs. of 1/2 lb. pkgs. **22¢**

Baked Beans 1 1/2 lbs. pkgs. **19¢**

Converted Rice 1 1/2 lbs. pkgs. **20¢**

Macaroni Dinner 1 1/2 lbs. pkgs. **19¢**

Primer Salsina 1 1/2 lbs. pkgs. **27¢**

Early Maine Coffee 1 1/2 lbs. pkgs. **29¢**

Ground Coffee 1 1/2 lbs. pkgs. **79¢**

Instant Coffee 1 1/2 lbs. pkgs. **81¢**

Clamp's Baby Food 10 1/2 - 97¢ - 85¢

Scribbans-Kemp Imported English Raisins 1 1/2 lbs. pkgs. **33¢**

Cadet Bag Food 3 1/2 oz. cans **28¢**

Fresh Eggs Quality Mail Grade "A" Large White . . . 69¢ Grade "A" Large White . . . 67¢ Domestic Swiss Cheese . . . 75¢ Swiss . . . 75¢ Hickory Smoked . . . 39¢ Hickory . . . 25¢ Luncher Cheese . . . 45¢ Broyers Cheese . . . 45¢	Fresh Eggs Quality Mail Grade "A" Large White . . . 69¢ Grade "A" Large White . . . 67¢ Domestic Swiss Cheese . . . 75¢ Swiss . . . 75¢ Hickory Smoked . . . 39¢ Hickory . . . 25¢ Luncher Cheese . . . 45¢ Broyers Cheese . . . 45¢	Florida Oranges Fancy Tomatoes Rome Apples Fresh Escarole Fancy - New York State Fine for Baking Tender - Florida Makes Delightful Salads Super-Sweet Pineapples For Delicious Salads Avocados	Florida Oranges Fancy Tomatoes Rome Apples Fresh Escarole Fancy - New York State Fine for Baking Tender - Florida Makes Delightful Salads Super-Sweet Pineapples For Delicious Salads Avocados	Florida Oranges Fancy Tomatoes Rome Apples Fresh Escarole Fancy - New York State Fine for Baking Tender - Florida Makes Delightful Salads Super-Sweet Pineapples For Delicious Salads Avocados	Florida Oranges Fancy Tomatoes Rome Apples Fresh Escarole Fancy - New York State Fine for Baking Tender - Florida Makes Delightful Salads Super-Sweet Pineapples For Delicious Salads Avocados
---	---	---	---	---	---

All*Grand Union Super Markets Remain Open Friday Nights Until 11 P.M.
 Store Hours: Weekdays and Saturday, 8:30 A.M. to 6:00 P.M. Open Friday evenings until 9:00 P.M.
 323 Lafayette Ave., Hawthorne

Store Hours: Weekdays and Saturday, 8:30 A.M. to 6:00 P.M.—Open Friday evenings until 9:00 P.M.
323 Lafayette Ave., Hawthorne

Mearns Reviews

(Continued from Page 1)

water mains, all of it in transit. "We have installed 100,000 feet of water mains in the last few years and we have returned back to the taxpayers of Hawthorne the sum of \$100,000 in surplus."

Mearns closed with the statement that these are but a few of the splendid achievements of this hard working public servant. The name of Commissioner William E. Fairhurst should stand high in the annals of our borough history.

President Raymond Rhodes presided at the meeting. A colored motion picture program presented by Lou France on the manufacture of pipe and a colored wild life picture was shown to these attending. Refreshments were served by a committee headed by Marjorie Monday.

Since 1947 the Commonwealth Edison Co. (Chicago) has spent more than \$20 million on work of replacement equipment for its generating plants.

Coal charged into coke ovens is baked without air, otherwise the resultant combustion would consume it.

Classified Adv.

WANTED

Reliable Couple to continue payments on a fine 3 Room **Furniture Outfit** returned by a customer for unavoidable reason; included with the outfit: Living Room and Kitchen, an 8'x12' rug, Washer, Dish, Silver, glassware, nice tables and lamps too. Your friends may think you paid \$500, but the total price left to pay is

\$187.50

No Money Down

Veterans of World War 2 require to deposit just their discharge papers to obtain the use of New Jersey Veterans Loan Act. Loans subject to the approval of the Veterans Loan Authority and Mrs. Cecilia America can serve as guarantors. Loans up to \$5,000 under Veterans' program. Over \$5,000 under credit—4% to 10% interest. You can always pick up a plan, a suite of an outfit at LESS than HALF at

BARNEY'S

Returned Furniture

Warehouse

1500 N. 10th St., Paterson, N. J. Open Daily 9:30 A.M. to 9 P.M. Free delivery. Call for FREE estimates or call for prices. No obligation.

Venetian Blinds

Scientifically Washed RECORDING RETAINING REFRESHING

County Floor Contractors

720 Lafayette Ave. Hawthorne 7-2728

TELEVISION SERVICE

Night and Saturday calls at reasonable rates. Antenna installation and repairs. MURPHY 4-8559. Mon. 1-15-15-22

TO LET

Store to let 255 Rea Avenue, Hawthorne; suitable for business. Call Silverside 2-1232. Simon H. Glass Inc. 125 Market St., Paterson, N. J.

Do you have evictions and Saturday's free? Make \$50-\$1000 a week. No experience necessary. Call Silverside 2-1232. Mon. 1-15-15-22

HILL DISPLAY CASES

and Refrigeration - Freezers. Sales, Blinds, Cleaners. **Harry Page, Inc.** 303 RIVER STREET. SH. 2-1946. Paterson, N. J.

1 WEEK ONLY GRAND REOPENING EXPANSION SALE 1 WEEK ONLY

106-110 W. B'WAY, PATERSON

Record Breaking Values! CARPETS • RUGS LINOLEUM • TILES

AMERICAN'S LOW OVERHEAD + BIG BUYING POWER + SUPER MARKET SELLING = TREMENDOUS SAVINGS

9 x 12 RUG SPECIALS

Description	Reg.	SALE
Green Blend Carpet	\$34.90	24.95
Grey Blend Carpet	34.90	24.95
Blue Splendor (Matching Throw Rug Free)	49.90	34.95
Blue Tone on Tone	44.90	29.95
American Hook Squares	44.90	29.95
Colonial Hook Squares	44.90	29.95
Green with Grey Tropic Leaf	44.90	29.95
Grey Sculptured with Rose Leaf Pattern	114.90	79.95
American Oriental	114.90	79.95
Large Sculptured Type	124.90	89.95
Grey Tone on Tone	124.90	89.95
Large Sculptured with Rose Petals	134.90	99.95
Green Heavy Twist	134.90	99.95

Terrific Savings! 27" STAIR & HALL CARPETS

Description	Per Yd. Reg.	SALE
Blue Oriental Berber Jute	5.98	1.98
Red Pile-Candy Strips Velvet	4.98	3.98
Grey Tone on Tone Axminster	6.75	4.98
Blue Tone on Tone Axminster	6.75	4.98
Colonial Hook Axminster	6.75	4.98
Green, Red, Grey-Sculptured	11.98	6.98

BIG CARLOAD OF GENUINE ASPHALT TILE

TO GO AT A RIDICULOUS PRICE OF 5¢ PER TILE

FELT BASE RUGS

OTHER SIZES	Reg.	SALE
7'6"x9'	4.95	3.95
6'6"x9'	3.95	2.95

FAMOUS MAKE 1951 FIBRE & SUMMER RUGS

Size	Reg.	SALE
8 x 10 Green, Grey	17.50	14.95
9 x 12 Grey, Green, Tan, Blue, Rose	19.50	15.95
9 x 15 Grey, Green, Rose	26.50	22.95

CONGOWALL and QUAKER WALL

Install Yourself and Save! Big Selections of Tile and Marble Patterns. Perfect Matchmaking. Cut from Full Rolls.

RUBBER MATS

Size	Reg.	SALE
20"x32" Oval or Rect.	2.95	1.98
14"x22" Outdoor Mat	2.95	1.98

COCOA MATS

Size	Reg.	SALE
14"x24"	1.98	1.98
1/4" Rubber Stair Treads	59¢ up	59¢ up

HEAVY FELT BASE LINOLEUM

39¢ SQ. YD. ACT NOW FOR HUGE SAVINGS ASSORTED PATTERNS—CUT FROM FULL ROLLS

ARMSTRONG'S & NAIRN'S

INLAID LINOLEUM LIGHT GAUGE MARBLE \$1.29 SQ. YD. REG. 1.59

AMERICAN LINOLEUM OUTLET

106-110 W. B'WAY (JUST OVER THE BRIDGE) PATERSON

THE HAWTHORNE PRESS

THURSDAY, MARCH 18, 1951

1,700 Uniformed CAP Men Will Assist Civil Defense In The Event Of A Disaster

TRIDENT—The New Jersey Civil Air Patrol, numbering 1,700 uniformed men in 22 squadrons, will assist in the event of a disaster, according to the National Communications network of 45 stations, all perform important air, ground and communications missions for the State Division of Civil Defense in the event of a disaster.

RIPATRANZONI MISSING IN KOREA ACTION

MISS Elinor Struck of 185 Park Avenue, Hawthorne, was given a letter by her husband, Ripatranzoni, who is missing in action in Korea, that he is still alive and well.

ELINOR STRUCK IS HONORED AT BRIDAL SHOWER

Miss Elinor Struck of 185 Park Avenue, Hawthorne, was given a letter by her husband, Ripatranzoni, who is missing in action in Korea, that he is still alive and well.

GARDEN CLUB HEARS TALK ON REGAL LILY

Mrs. Theodore Barker gave a talk on the introduction of the Regal Lily into the United States at the meeting of the Hawthorne Garden Club, held at the home of Mrs. Paul Behlman, 161 Washington Avenue.

SENIOR CHOIR TO PRESENT CANTATA

"The Seven Words of Christ," a cantata, will be presented by the senior choir of the First Reformed Church of Hawthorne on Palm Sunday at 4:00 P. M. in the church.

TV For Schools Free Through American Stores

Visual education through television is today vitally important to the student body of the nation's schools. American Stores is offering this service free to schools.

13 N. J. Centers Depend On Easter Seal Campaign

Thirteen New Jersey centers for the treatment of crippled children depend on the Easter Seal campaign for their maintenance. The centers are: The New Jersey Society for Crippled Children and Adults, The New Jersey Society for Crippled Children and Adults, The New Jersey Society for Crippled Children and Adults.

LOCAL WOMAN LOSES \$2,500 AS VICTIM OF OLD TRICK

That old confidence trick should be handled by a man referred to by the women as "the old man" who had been in the fourth floor of a nearby building. The woman who said she lost \$2,500 was Mrs. John J. Lewis, 60, of 125-200, according to police reports.

COMMUNITIES REPORT MANY BENEFITS OF SPRING CLEAN-UP

Since the gift of a crisp new playground to a child resulted in the springing up of her home and neighborhood some 42 years ago, community clean-up has been an annual spring tradition in the United States.

WOMAN'S CLUB TO VIEW TWO FILMS

"Flight to Romance," a sound technicolor picture, will be shown at the Hawthorne Women's Club on Thursday evening at 8:00 P. M.

LOCAL MAN HONORED AT NEWARK COLL.

NEWARK—Academic honors for the winter term which ended last January at Newark College of Engineering were announced today by the college with three students from this area included among those receiving outstanding academic records.

Regular Republican Auxiliary Installed

The installation dinner of the auxiliary of the Regular Republican Club was held on Saturday evening at the Black Bear in Paterson.

VFW Auxiliary To Elect Tuesday

The nomination and election of officers of the auxiliary to the VFW will be held Tuesday evening at 8:00 P. M. at the VFW hall.

Charges Unreasonable Standards for Induction Threaten National Security

American will be ill-prepared for all-out war unless its armed forces standards are reasonably high. Standards which are presently being set by the War Relocation Authority are threatening national security.

MISS DOLORES MATTECCI

Miss Dolores Mattecci, 236 Lincoln Avenue, Hawthorne, has been elected to the honor roll for academic achievement at the Hawthorne High School.

St. Patrick's Day

St. Patrick's Day is celebrated on March 17th. The day is a holiday in many parts of the world.

John G. Rozema Appointed Comm. Of Public Improvements

At Special Meeting Held March 12

John G. Rozema of 197 Park Avenue, was appointed as the Commissioner of Public Improvements at a special meeting of the borough council.

Major Louis Bay in moving the appointment stated that a great deal of time had been spent in searching for a man who could easily fill the position.

He felt that with the cooperation of all departments, the borough would be a credit to the county and would successfully fill the office.

The appointment was seconded by Commissioner John L. Titus.

Commissioner Titus in accepting the appointment stated that he was happy to be able to assist the borough in the obligations of the office.

He stated that he would follow the program set up by the late Mayor Hobbs, Mayor Joseph Harris, Mayor Joseph E. Harris, and the present Mayor and councilmen.

He felt that the plan being followed was one of the best as provided by the recent tax reduction and the fine financial condition of the borough today.

Rozema, born March 20, 1903 in Paterson, lived in Paterson and Prospect Park until September 1950 when he married the former Jeanne Bona of Lincoln Avenue and has resided at the above address since.

He has three children, Marjorie Bernice, a senior library assistant at the Paterson Public Library; Kathleen Jean, a service representative of the Company and Robert John, a senior in Hawthorne High School.

He is a graduate of Prospect Park School of Drake's Business School, and attended the American Institute School in Pennsylvania.

He is a customer contact man with a woolen concern in New York for five years, and has been in the woolen business for three years, and has been with Vantage & Co. since 1947.

SURVEY SHOWS SHORTAGE OF NURSES IN P.C.

That Passaic County has a deficit of 17 nurses to meet present requirements has been disclosed by a survey of nursing needs in the county.

The survey was conducted by the U. S. Public Health Service in cooperation with the New Jersey State Nurses' Association.

Miss E. Elizabeth Brown, R.N., president of the New Jersey State Nurses' Association, said the survey was headed by Miss Mary G. Adolph, R.N., of the U. S. Public Health Service in cooperation with the major health, nursing and allied organizations in the state.

As a result of the study, it is estimated that Passaic County needs 17 nurses for general hospital service, 65 nurses for tuberculosis hospitals, and 34 nurses for chronic hospitals and nursing homes.

In addition, the survey disclosed that New Jersey will need 1,000 nurses in the next five years.

Objectives of the survey included: determining the needs of the present and future; estimating the present and future needs for nurses in New Jersey; and the gathering of data needed to form plans to develop the state's nursing resources on a fifty per cent of the Army's job.

KNOW YOUR GOVERNMENT

WIPE THE SLATE
As Congress takes up the problem of financing a \$10 billion dollar peace-war budget, drastic measures are being urged to reduce the distance between the proposed spending total and the income of \$8 billion dollars.

Many of the nation's outstanding fiscal authorities point to the possibility of reducing the budget deficit as a time when the country's spending program should be more realistic and more realistic with tough controls ahead.

The top authorities in finance and taxation on the Committee put a finger on the soft spots in the budget and cite the possible savings of \$10 billion dollars. These could be made without harm to the nation's welfare and war effort. The first step, says the Committee, is to "wipe the slate of a host of spending items not acted by previous Congresses. These annually 'freezes' some \$8 billion to the Committee estimate. In recent years leading New Jersey officials and organizations, including the New Jersey Taxpayers Association, have assailed the practice under which the Federal Government takes money from the pockets of taxpayers on the one hand and does it out to state and local governments along with heavy implications of Federal control over their programs.

"The area of Federal grants and subsidies . . . is another example of an activity in which the Federal government should not be engaged," asserts the Committee. "The government has nothing of its own to give away. All that it gives or grants to states, cities, or individuals must first obtain from the citizens in taxes or loans. An individual's consequence is the degree to which the grant system is required in an extension of Federal control over, and interference with, the management by the states of their own affairs. This is a logical outgrowth of the fiscal dependency that the grant system creates and promotes."

SPORTS AFFID
By TED KESTING
Does shooting have a future? You might as well hazard a guess as to the future of our

about the lack of Olympic spirit in gun handling. If ever there was a time when Americans should be able to handle a gun—when it is now!

New Jersey Fish and Wildlife News
TRENTON—Trust distribution of the 1951 trout season at 9 A. M. on Saturday April 14, the State Department of Conservation and Economic Development, reported today.

By the start of the season, the Division expects to have 220,000 legal size trout in the public streams of the State, including 100,000 brook trout, 75,000 minnow trout, and 45,000 brown trout. Dr. A. Heston Underhill, Director of the Division of Fish and Game announced. The balance of the production of trout at the world famous Hackensack River Fish Hatchery will be available during the season which will continue to September 30.

Chief Protector Fred C. Craig and his crew will supervise the trout season. The trout season is the most popular of the trout season. The trout season is the most popular of the trout season. The trout season is the most popular of the trout season.

Orange Star On St. Patrick's Day?—Never!!
NEW YORK—St. Patrick, already credited with a long list of accomplishments, may be responsible next for sticking out Broadway's newest skyscraper for at least one day next year.

The Mutual Life Weather Star fishing water, which includes Big Flat Brook, Sussex County, will not be lit on St. Patrick's Day. The big illuminated Star shines green for clear weather—and that would be entirely appropriate on St. Patrick's Day. But if cloudy weather or rain is the forecast, the Star would have to be orange!

The Mutual Life, adept at figuring risks, said today it would not chance the blame for a Dumbbrook on upper Broadway. Unless the star is green, it will be orange.

MATERNITY CORSETS COSMEVO
WHERE INSURED SAVINGS
Alexander Hamilton Savings & Loan Association
Hawthorne Bus Stop At Door
138 Washington St., Paterson
Opp. City Hall St. 5-6815

Faber Plumbing And Heating Co.
Oil Burners
Heating Systems Installed
27 Diamond Bridge Ave.
Hawthorne

Senchman
REGULAR 1.35
FIRST QUALITY • 51 GAUGE • 15 DENIER
NYLONS 94¢

- famous name brands
- in all new spring shades
- Sizes 8 1/2 to 11
- Every pair guaranteed perfect

Senchman
215 MAIN ST., PATERSON
Stores in Paterson and Hackensack
OPEN DAILY TO 6 — THURSDAY TO 9

AMERICAN LINOLEUM OUTLET
CARPETS • BROADLOOMS • ASPHALT TILE
RUBBER TILE • INLAIDS • SINK TOPS • COVE & BASE
Senchman Sales Inc. Service to Paterson, Hudson, Hackensack, and all surrounding areas.
100 & 112 W. BROADWAY ADJACENT 4-3383

NEW! FLEXNIT "Sumthin"
Sensationally different
youth-girdle that thins amazingly!
9 WAYS WONDERFUL!

Exclusive New Flex-Nit girdle...
You get all these extras when you buy your girdle or bra at The Corset Bar...
OPEN THURSDAYS TO 9 P. M.

The Corset Bar
WASHINGTON AND VAN KUTEN STS., PATERSON

MORNING BECOMES ELECTRIC
NANCY: "Fred-d-d-d! C'mon, get up! Breakfast is waiting for you. In fact, it's a super-duper breakfast... but it only costs a few pennies to prepare."

FREDDY: "Gosh, Nancy, you're laughing again—so early in the morning. Yesterday you woke me up by saying that I can use my electric canner 17 hours for only a penny. Heck, that's no way to say good morning—even if you are enthusiastic about how little electricity costs!"

REDDY: "While the cost of everything is going up and up, my meter remains the same. I'll clear the house, bring you entertainment—everything to make your life more pleasant—... for only a few pennies a day!"

ELECTRICITY—DOES SO MUCH—COSTS SO LITTLE

Wozney Quality Bakery
Now Under New Management
Complete line of quality baked bread, cake, and pastry.
Specializing in wedding, birthday and party cakes made to order.
Wozney Quality Bakery
204 Diamond Bridge Ave.
Hawthorne, N. J.

ECONOMY LEADERS!
NEW FORD TRUCKS for '51
feature **POWER PILOT ECONOMY**
Whatever truck job you do, Ford puts gas dollars into your pocket with the POWER PILOT! Thousands of trucks in actual service have PROVED it to be a great money-saver!

NEW Ford Trucks for '51 are NEW in ways that can mean more money in the bank for you.
Ford step-ahead engineering has engineered new ways of making Ford Trucks do more better job for you—at all lower cost. The result: Important advantages to engine, clutch, axle, transmission, bodies... in new money on gas and oil, on service and repair!
Come in and get the facts today! Call on your Ford dealer.

NEW All new Ford Trucks for '51. Like the F-1, Ford has chrome-plated wheels, chrome-plated bumpers for longer, stiffer life and top engine performance.

SEE YOUR TRUCK DEALER FOR EVERY TRUCK NEED

SEA FOOD
BROILED LOBSTER—\$1.00—DAILY
TROUT—LAL—SOFT SHELL CRAB—BLUEFISH—HAWTHORNE
TROUT—LAL—SALMON—SHRIMP—SCALLOPS—
OYSTERS—CLAMS—SOFT FISH—SWORD FISH—
100 & 112 W. BROADWAY ADJACENT 4-3383

State Chamber Favors Return of \$50 Million to U. C. Trust Fund

NEWARK—Legislation by Assemblyman Russell of Essex County to repay to the unemployment compensation trust fund \$50,000,000 borrowed to strengthen the disability benefit fund is supported by the State Chamber of Commerce as being "in the general public interest."

Repayment of the \$50,000,000 under the bill, Assembly 556, will strengthen the unemployment reserve and thereby benefit all workers now covered under the unemployment compensation act. The bill specifically provides that the money cannot be spent for any purpose except the payment of unemployment benefits and for administrative purposes. Employees would not suffer any loss by the proposed transfer. It would simply be a shift of the money from the temporary disability benefit fund where it is not needed. If it should become necessary to draw money from the temporary disability fund, the State Chamber believes it was unnecessary, opposed the transfer. Experience has proved the State Chamber's contention that this money was not needed in the state temporary disability benefit fund. In less than three years this fund has accumulated more than \$25,000,000, which is more than five times the amount of benefits paid in 1950.

The State Chamber pointed out that a substantial section of organized labor took the same position at a public hearing last December when their representative declared the original transfer from the unemployment compensation fund was unnecessary and unwarranted.

"The disability fund today amounts to approximately \$30,000,000, while benefits payable for 1950 were slightly more than \$5,000,000," the State Chamber said. "These waters opened by this fund would be assured ample protection from a reserve of \$25,000,000 after the transfer has been completed."

"In effect this reserve will equal six times the disability benefits paid out last year and would assure continuance of such

Why Children Quit Taking Music Lessons

Fewer children would quit taking music lessons if teachers and parents would help them to enjoy music, rather than drill them for show-off recitals.

That's the conclusion reached after a survey made among teachers by Good Housekeeping magazine, which says that, "The more music a child can play—good or bad, but music attractive to him—the prouder and more willing to continue his lessons he will be."

Writing in the March issue, music editor George Marek reports that teachers, themselves, blame poor teaching methods for most cases of abandoned music lessons. Parents, he says, must choose a teacher who uses "skill, imagination and daring."

The author quotes Marguerite Hood, president of the Music Educators National Forum, as saying that teachers, themselves, blame poor teaching methods for most cases of abandoned music lessons. Parents, he says, must choose a teacher who uses "skill, imagination and daring."

CLASSIFIED CLEARAWAY!

23 BEDROOM SUITES AT HALF PRICE
\$69 \$89 \$119
Others—\$200 Suites for \$249

JUST 28 GOLD SEAL CONGOLEUM HEAVY GRADE 9'x12' RUGS \$4.95
(Second)

8' x 12' WOOL FACE RUGS \$19.95
Just 12

OTTOMANS FOOTSTOOLS \$5
Big, Fancy Overstuffed in finer fabrics

STUDENTS' DESKS \$19.95

CHINA LAMPS with Shades \$2.95

LIVING ROOM \$88 \$119 \$149
6 Pk. Junior Colonial Dining Room Grouping \$149

18th Century Duncan Phyfe Junior Dining Room in hand rubbed Mahogany finish, worth once price \$188

LIVING ROOM \$149
3 Pk. Luxurious Suite in GENUINE Government standard MODERN style, 10 year guarantee you save HALF!

LOVE SEATS with HIDDEN BED \$100
YES here's another sleeper... a famous label and a well known name... we can't tell you but you WILL... only five up.

Save \$98

Open Thurs. Evens. Until 9 55 MAIN ST. PATERSON, N. J.

GREAT WAREHOUSE CLEARANCE
BURSTING WITH BARGAINS!
LAST 3 DAYS
SALE ENDS SATURDAY
Call at the Store

NO MONEY DOWN 24 MONTHS TO PAY
Veterans of World War 2 require No Deposit... all you need are your honorable discharge papers and you can buy up to \$1,000 worth if you are eligible under the Veterans Loan Act of New Jersey. Loans are subject to the approval of the Veterans Loans Authority.

Mr. and Mrs. Civilian America can buy anything up to \$49 without deposit and enjoy Government approved CREDIT... 65 weeks to pay.

23 BEDROOM SUITES AT HALF PRICE
\$69 \$89 \$119
Others—\$200 Suites for \$249

JUST 28 GOLD SEAL CONGOLEUM HEAVY GRADE 9'x12' RUGS \$4.95
(Second)

8' x 12' WOOL FACE RUGS \$19.95
Just 12

OTTOMANS FOOTSTOOLS \$5
Big, Fancy Overstuffed in finer fabrics

STUDENTS' DESKS \$19.95

CHINA LAMPS with Shades \$2.95

LIVING ROOM \$88 \$119 \$149
6 Pk. Junior Colonial Dining Room Grouping \$149

18th Century Duncan Phyfe Junior Dining Room in hand rubbed Mahogany finish, worth once price \$188

LIVING ROOM \$149
3 Pk. Luxurious Suite in GENUINE Government standard MODERN style, 10 year guarantee you save HALF!

LOVE SEATS with HIDDEN BED \$100
YES here's another sleeper... a famous label and a well known name... we can't tell you but you WILL... only five up.

Save \$98

Open Thurs. Evens. Until 9 55 MAIN ST. PATERSON, N. J.

Barney's
Open Thurs. Evens. Until 9 55 MAIN ST. PATERSON, N. J.

ONE HUGE PILE OF MATTRESSES \$15
Of course we are allowed to mention the famous name of Barney's... mattresses and box springs made to suit your taste... if they are not to suit you, we will give you a brand new set of a brand new mattress... right out of the store or at a discount.

14 LIVING ROOMS SAVE HALF \$88 \$119 \$149
6 Pk. Junior Colonial Dining Room Grouping \$149

18th Century Duncan Phyfe Junior Dining Room in hand rubbed Mahogany finish, worth once price \$188

LIVING ROOM \$149
3 Pk. Luxurious Suite in GENUINE Government standard MODERN style, 10 year guarantee you save HALF!

LOVE SEATS with HIDDEN BED \$100
YES here's another sleeper... a famous label and a well known name... we can't tell you but you WILL... only five up.

Save \$98

Open Thurs. Evens. Until 9 55 MAIN ST. PATERSON, N. J.

The Hawthorne Press

And the NORTH HALEND NEWS

Published Every Thursday by
HAWTHORNE PUBLICATIONS, Inc.
463-465 LAUREL AVENUE
HAWTHORNE, N. J.

Editor: JOSEPH MISSONELLI
Telephone: HAWTHORNE 7-3330

Entered as second-class matter November 27, 1924, at
the Hawthorne Branch, Paterson, N. J., post office, under the
Act of March 3, 1879.
Subscription price, \$2.00 per year in Advance and Foreign
Countries. Elsewhere in U. S. & C. \$3.00 per year.

THURSDAY, MARCH 15, 1951

...Editorial...

SURE WINNER

It is generally conceded that there's a degree of gambling spirit in all of us. In some cases only a "sure thing" brings it out.

Well, here's a genuine, 14 karat, straight-from-the-feed-bag "sure thing" that every one of us can have a piece of... the American Cancer Society.

There's no such thing as an incurable disease, says science. "There are only diseases for which the cure is not yet known."

On this very logical premise, cancer research is no gamble—it's a long term investment with a precious dividend of life itself. Along the many avenues of research which may lead to discovery of cancer's cause and cure, science is finding new techniques of cancer control which may someday save your life, or that of someone dear to you. Today, science and medicine are saving the lives of one-fourth of all cancer patients, who, not so long ago, might have been considered hopeless cases.

The 1951 crusade of the American Cancer Society gives everyone the privilege of joining the only national voluntary agency devoted to the cause of cancer control exclusively.

Twenty-five cents of every dollar contributed is used for cancer research. Part of the money pays for public and professional education which, on the basis of present knowledge alone, can double the number of lives saved. And part of the money is used for service to cancer patients and their families. Help science help you. Help guard your family. Help to conquer cancer—by contributing to the 1951 Crusade of the American Cancer Society.

First Jersey Coins in Honor of St. Patrick

TRENTON—The first coin officially recognized by the coinage of New Jersey was the "Patrick's Penny" and was introduced by Quaker Mark Newberry, a first banker, living near Gloucester in 1662. The story of the "Quaker and St. Patrick" is told in the "THIS IS NEW JERSEY" radio series, presented by the State Department of Conservation and Economic Development in cooperation with the New Jersey Manufacturers Association and the "77" broadcast by the station of the area using it as a public service feature.

According to the story, Mark Newberry, a candle maker, was driven from England because of his Quaker beliefs. He went to Dublin and while there probably acquired the supply of copper pennies which he later introduced in the colony. On their face, the coins carried a picture of St. Patrick driving out the snakes; the reverse side had the picture of an indigenous King. While New Jersey was serving in 1642 he offered his supply of these coins at legal tender of the colony and guaranteed their worth with 200 acres of the farm land he owned near Gloucester. The Quaker's day, 38,000,000 times a year.

SOME CUT!



Enlarge Quarters Of American Linoleum Outlet Store



Hawthorne High Girl Wins DAR Statewide Contest in Sewing

Marion De Young, Hawthorne High School sophomore, has won the 1951 DAR Statewide Contest in Sewing. She was the only girl from each school entering a costume which she had made herself.

Record Crowds Applaud 1951 Chrysler Displays

DETROIT—An unprecedented reception by the public of the 1951 Chrysler models has been reported by dealers in all parts of the country where the automobiles were shown. Blood on display early this month.

The numerous improvements in all of the models, together with the spectacular array of the all-new 150-horsepower V-8 "Fire Power" engine, provided attractions without parallel in the twenty-seven years of the Chrysler line, dealers reported.

N. J. State Redevelopment Plans Continue

TRENTON—Assurance that community redevelopment plans can continue with federal support can be given in the current issue of the Jersey Plans published by the State Department of Conservation and Economic Development. Devoting the entire issue to the subject of redevelopment, the editor comments, "Federal grants will continue to be available and in many localities, where the redevelopment project will be of special aid to the rearmament program, should be expedited to secure a capital grant fund."

Army Offers Technical School Training

For the fourth consecutive year, the United States Army is offering Technical School Training to civilian high school graduates, according to an announcement by Lt. John T. Parady of the United States Army and United States Air Force Recruiting Station in the Post Office Building, Paterson.

The plan allows the high school graduates to apply for the school of their choice as a civilian. The course available, all of which are basic and quality training for further advanced training in various fields of interest, ranging from two to twelve months duration and among others include: Electricity, Auto Body Repair, Army Administration, Welding, Medical Laboratory Procedure, Generator Maintenance, etc.

Accepted applicants will take their basic training at Fort Dix and proceed from there directly to a school.

Interested high school graduates can obtain application blanks at the Recruiting Station, Room 212, Post Office Building, Paterson, N. J.

Average Auto Tax Nearly Equals Federal Income Tax of Average Citizen

TRENTON—Mr. Average Citizen now sweating out the March 15 federal income tax deadline would be surprised to learn that taxes on the average New Jersey motor vehicle over a year's time add up to nearly what he pays in federal income taxes.

"The citizen with three hundred dollars to feed on \$2,000 a year—the average income according to latest census reports—will pay an \$80 federal income tax," E. W. Voths, Chairman of the N. J. Highway Users Conference and President of the New Jersey Patrol Bureau, said. "On the other hand, state and federal automobile and gasoline taxes now average \$76.00 annually for each motor vehicle registered here."

"Many motorists are not fully aware of the cost of these automobile taxes, must experience of which is the gasoline levy. They don't realize they pay a total of 45 cents in taxes on every 10 gallons of gasoline they buy—30 cents to the State and 15 cents to the Federal Government."

"If the motorist kept track of his gasoline taxes, motor vehicle fees, driver's license fees and various excise taxes on new auto, tires, parts and accessories, he would soon see why he is so often called the most heavily taxed citizen in the state."

"To make the Best Better" is the challenging motto of every citizen throughout the nation.

Reg. Republican

(Continued from Page 1)

Job would continue to grow as it has in the past.

Mrs. Flowers extended her congratulations to the club, which is one of the oldest Republican organizations in the county, and urged them to continue on with their fine civic and social program which would not only benefit the club by the borough as well.

Other officers installed were: Treasurer Mrs. Bertha Rhodes; President Mrs. Elizabeth Rhodes; Vice-President Mrs. Christine Bruggeman; Secretary Mrs. Mary Hanna; and Secretary Mrs. Alice Leeman.

A social hour followed the dinner with community singing being enjoyed.

Get ready for SPRING Planting

Host • Forks • Rakes • Spades
Trowels • Hoe • Shovel • Cultivators
Garden Hose • Insecticides • Lawn Mowers
Pruning Tools • Wheel Barrows
Fertilizer Spreader

Don't Miss • Shop Now
Vigors • Savings • Repair Men
Hoffman Paul Moss • Green Seed

FRANK SHERIDAN

PAINTS • HARDWARE • WINDOW GLASS
BUILDERS SUPPLIES

Telephone LAUREL 8-0813

SPECIAL SERVICE
We Cut And Thread
Pipe Up To 3" Dia.

Also A Full Line of Industrial Needs
ELECTRICAL APPLIANCES AND RADIO REPAIRS
128 NORTH MAIN STREET PATERSON, N. J.

Hotpoint

ONLY \$209.95 New 6.10 cu. ft.

17-lb. Speed Freezer!

Genuine Hotpoint Quality

● You'll have to see this new low-priced Hotpoint to appreciate what a great quality value it is... the kind of top-quality you expect from Hotpoint. Here's the same all-steel construction found in de luxe models, the same beautiful Calgloss enamel finish that won't chip, crack, or flake. Don't wait—see it today!

- Large glass chiller tray
- Durable, corrosion-resisting shelves
- Automatic interior light
- Safety Stop checks door swing
- Automatic door latch
- 5-Year Protection Plan on famous Thirlmaster Unit

65 WEEKS TO PAY

FABER PLUMBING & HEATING CO.

Visit Our Showroom

237 DIAMOND BRIDGE AVENUE HAWTHORNE, N. J.

Mrs. Spear Again Heads First Reformed Church Woman's Guild

Mrs. George Spear was re-elected president of the Woman's Guild of the First Reformed Church of Hawthorne last week. Other officers elected were: Vice-president, Mrs. John Kierst; secretary, Mrs. Peter A. Wiseman; financial secretary, Mrs. M. Hays; and treasurer, Mrs. Constance Grivwa.

The group voted to make their annual donation to the American Red Cross.

Two new members were received into the guild. They were: Mrs. Russell Storms and Mrs. Eleanor Alexander.

The next meeting of the group will be held on April 3 at 1:30 o'clock and will be preceded by a covered dish luncheon.

A fashion show was presented by Mrs. Thelma Schmidt of the Flower House. Many beautiful costumes were modeled by the following: Mrs. Robert Keiler, Jr., Mrs. Lillian Anderson, Mrs. Peter Keiler, Jr., Mrs. Linda Hardman, Mrs. George Spear, Mrs. Charles Ringel, Mrs. Howard Williams, Mrs. Herbert, Mrs. Linda Hardman, Mrs. William Floyd, Sr., Mrs. Maria Dunn, Mrs. Frank Stager, Mrs. R. Hardman, Mrs. Thomas Clark and Miss Lattig.

Those present were Mrs. William Floyd, Sr., Mrs. Edward DuMont, Mrs. Howard Williams, Mrs. George Anderson, Mrs. Philip Hartley, Mrs. Thomas Hays, Mrs. H. Herbruck, Mrs. Frank Stager, Mrs. Frank Van Nieuwen, Mrs. John Hunt and Mrs. O. Van Blarcom.

Also Mrs. Thomas Wright, Mrs. William Deter, Mrs. T. R. Keiler, Mrs. Herman Brand, Mrs. John Phipps, Mrs. William Meers, Mrs. John S. Moore, Mrs. H. H. Patterson, Mrs. H. H. Patterson, Mrs. Corneille Grivwa, Mrs. George Spear, Mrs. Maria Dunn, Mrs. Charles Ringel, Mrs. Eleanor Alexander, Mrs. Russell Storms and Mrs. Peter Wiseman.

Guests were Mrs. Robert Keiler, Jr., Mrs. Linda Hardman, Mrs. R. Hartmann, Mrs. H. H. Patterson, Mrs. Fred Lattig, Mrs. Barbara Lattig, Master Glenn Lattig, Miss Shirley Tompkins, Mrs. I. Reddy, Mrs. Bertha Schoon, Mrs. Fred Daw, Mrs. Alice Elsenbach, Mrs. Ida Meyer, Mrs. Robert Dietz, Sr., and Mrs. James Longson.

Nate Our Signs For Grid Pack With Green Bay

Nate Our, training football tackle who went from Hawthorne High to Stanford at Springfield College, Mass., has signed to play the 1951 National Football League season with the Green Bay Packers.

Our, now the second Passaic County player in the National League, the other being Silvio Areno, co-Captain High guard, now with the Cleveland Browns.

Averno, came out of Muhlenberg to join the Baltimore Colts and was a regular lineman last year before the Colts dropped from the NFL. The Browns then called Averno in the player draft. Big signing is a center at Springfield and for the last two seasons has been an all-around player in the college. He stands 6-5 and weighs 240 pounds.

Our, not picked in the college draft, also was sought after by the New York Giants and the Philadelphia Eagles, before accepting the terms of the Packers, it was reported.

Our, then was with Hawthorne football before the war, under Coach Marjory Condon, then was in service. He entered Springfield in 1948.

NEW BRUNSWICK—In case you hadn't noticed, it's getting to be more of a woman's world.

Joan Whelan, beauty queen of the Valley Stream, L. I., proved herself best judge of meat on the menu at the University of Maryland, when she was crowned queen at the Aggie's field day, last spring, was high point scorer in the second annual livestock judging contest of Black and White Club at the College of Agriculture.

She, not all, Joan's roommate, Virginia Blankenmeyer of Riverside, also collected the title of "Miss Aggie" in the "Carol Peace of Spring Lake won three prizes and Joan Beron of Newark was crowned queen. All are students at the New Jersey College for Women and are taking courses at the nearby College of Agriculture.

She, not all, Joan's roommate, Virginia Blankenmeyer of Riverside, also collected the title of "Miss Aggie" in the "Carol Peace of Spring Lake won three prizes and Joan Beron of Newark was crowned queen. All are students at the New Jersey College for Women and are taking courses at the nearby College of Agriculture.

She, not all, Joan's roommate, Virginia Blankenmeyer of Riverside, also collected the title of "Miss Aggie" in the "Carol Peace of Spring Lake won three prizes and Joan Beron of Newark was crowned queen. All are students at the New Jersey College for Women and are taking courses at the nearby College of Agriculture.

She, not all, Joan's roommate, Virginia Blankenmeyer of Riverside, also collected the title of "Miss Aggie" in the "Carol Peace of Spring Lake won three prizes and Joan Beron of Newark was crowned queen. All are students at the New Jersey College for Women and are taking courses at the nearby College of Agriculture.

She, not all, Joan's roommate, Virginia Blankenmeyer of Riverside, also collected the title of "Miss Aggie" in the "Carol Peace of Spring Lake won three prizes and Joan Beron of Newark was crowned queen. All are students at the New Jersey College for Women and are taking courses at the nearby College of Agriculture.

Mr. R. Hartmann, Mrs. H. H. Patterson, Mrs. Fred Lattig, Mrs. Barbara Lattig, Master Glenn Lattig, Miss Shirley Tompkins, Mrs. I. Reddy, Mrs. Bertha Schoon, Mrs. Fred Daw, Mrs. Alice Elsenbach, Mrs. Ida Meyer, Mrs. Robert Dietz, Sr., and Mrs. James Longson.

Mrs. George Spear was re-elected president of the Woman's Guild of the First Reformed Church of Hawthorne last week. Other officers elected were: Vice-president, Mrs. John Kierst; secretary, Mrs. Peter A. Wiseman; financial secretary, Mrs. M. Hays; and treasurer, Mrs. Constance Grivwa.

The group voted to make their annual donation to the American Red Cross.

Two new members were received into the guild. They were: Mrs. Russell Storms and Mrs. Eleanor Alexander.

The next meeting of the group will be held on April 3 at 1:30 o'clock and will be preceded by a covered dish luncheon.

A fashion show was presented by Mrs. Thelma Schmidt of the Flower House. Many beautiful costumes were modeled by the following: Mrs. Robert Keiler, Jr., Mrs. Lillian Anderson, Mrs. Peter Keiler, Jr., Mrs. Linda Hardman, Mrs. George Spear, Mrs. Charles Ringel, Mrs. Howard Williams, Mrs. Herbert, Mrs. Linda Hardman, Mrs. William Floyd, Sr., Mrs. Maria Dunn, Mrs. Frank Stager, Mrs. R. Hardman, Mrs. Thomas Clark and Miss Lattig.

Those present were Mrs. William Floyd, Sr., Mrs. Edward DuMont, Mrs. Howard Williams, Mrs. George Anderson, Mrs. Philip Hartley, Mrs. Thomas Hays, Mrs. H. Herbruck, Mrs. Frank Stager, Mrs. Frank Van Nieuwen, Mrs. John Hunt and Mrs. O. Van Blarcom.

Also Mrs. Thomas Wright, Mrs. William Deter, Mrs. T. R. Keiler, Mrs. Herman Brand, Mrs. John Phipps, Mrs. William Meers, Mrs. John S. Moore, Mrs. H. H. Patterson, Mrs. H. H. Patterson, Mrs. Corneille Grivwa, Mrs. George Spear, Mrs. Maria Dunn, Mrs. Charles Ringel, Mrs. Eleanor Alexander, Mrs. Russell Storms and Mrs. Peter Wiseman.

Guests were Mrs. Robert Keiler, Jr., Mrs. Linda Hardman, Mrs. R. Hartmann, Mrs. H. H. Patterson, Mrs. Fred Lattig, Mrs. Barbara Lattig, Master Glenn Lattig, Miss Shirley Tompkins, Mrs. I. Reddy, Mrs. Bertha Schoon, Mrs. Fred Daw, Mrs. Alice Elsenbach, Mrs. Ida Meyer, Mrs. Robert Dietz, Sr., and Mrs. James Longson.

UNITED STATES TRUST COMPANY

Main Office: 126 MARKET STREET

Branches: NEW YORK, PHILADELPHIA, PITTSBURGH, RICHMOND, WASHINGTON, D. C.

Member Federal Reserve and Federal Deposit Insurance Corporation

Capital and Surplus: \$1,000,000

Assets: \$10,000,000

Liabilities: \$10,000,000

Income: \$1,000,000

Expenses: \$1,000,000

Profit: \$1,000,000

Dividend: \$1,000,000

Reserve: \$1,000,000

Surplus: \$1,000,000

Assets: \$10,000,000

Liabilities: \$10,000,000

Income: \$1,000,000

Expenses: \$1,000,000

Profit: \$1,000,000

Dividend: \$1,000,000

Reserve: \$1,000,000

Surplus: \$1,000,000

Assets: \$10,000,000

Liabilities: \$10,000,000

Income: \$1,000,000

Expenses: \$1,000,000

Profit: \$1,000,000

Dividend: \$1,000,000

Reserve: \$1,000,000

Surplus: \$1,000,000

Assets: \$10,000,000

Liabilities: \$10,000,000

Income: \$1,000,000

Expenses: \$1,000,000

Profit: \$1,000,000

Dividend: \$1,000,000

Reserve: \$1,000,000

Surplus: \$1,000,000

Assets: \$10,000,000

Liabilities: \$10,000,000

Income: \$1,000,000

Expenses: \$1,000,000

Profit: \$1,000,000

Dividend: \$1,000,000

Reserve: \$1,000,000

Surplus: \$1,000,000

Assets: \$10,000,000

Liabilities: \$10,000,000

Income: \$1,000,000

Expenses: \$1,000,000

Profit: \$1,000,000

Dividend: \$1,000,000

Reserve: \$1,000,000

Surplus: \$1,000,000

Assets: \$10,000,000

Liabilities: \$10,000,000

Income: \$1,000,000

Expenses: \$1,000,000

Profit: \$1,000,000

Dividend: \$1,000,000

Reserve: \$1,000,000

Surplus: \$1,000,000

Assets: \$10,000,000

Liabilities: \$10,000,000

Income: \$1,000,000

Expenses: \$1,000,000

Profit: \$1,000,000

Dividend: \$1,000,000

Reserve: \$1,000,000

Surplus: \$1,000,000

Assets: \$10,000,000

Liabilities: \$10,000,000

Income: \$1,000,000

Expenses: \$1,000,000

Profit: \$1,000,000

Dividend: \$1,000,000

Reserve: \$1,000,000

Surplus: \$1,000,000

Assets: \$10,000,000

Liabilities: \$10,000,000

Income: \$1,000,000

Expenses: \$1,000,000

Profit: \$1,000,000

Dividend: \$1,000,000

Reserve: \$1,000,000

Surplus: \$1,000,000

Assets: \$10,000,000

Liabilities: \$10,000,000

Income: \$1,000,000

Expenses: \$1,000,000

Profit: \$1,000,000

Dividend: \$1,000,000

Reserve: \$1,000,000

Surplus: \$1,000,000

Assets: \$10,000,000

Liabilities: \$10,000,000

Income: \$1,000,000

Expenses: \$1,000,000

Profit: \$1,000,000

Dividend: \$1,000,000

Reserve: \$1,000,000

Surplus: \$1,000,000

Assets: \$10,000,000

Liabilities: \$10,000,000

Income: \$1,000,000

Expenses: \$1,000,000

Profit: \$1,000,000

Dividend: \$1,000,000

Reserve: \$1,000,000

</

The Hawthorne Press

And the NORTH HALEND NEWS

Published Every Thursday by
HAWTHORNE PUBLICATIONS, Inc.
463-465 LAFAYETTE AVENUE
HAWTHORNE, N. J.

Editor: JOSEPH MISSONELLI
Telephone: HAWTHORNE 7-3350

Entered as second-class matter November 21, 1924, at the Hawthorne Branch, Paterson, N. J., post office, under the Act of March 3, 1879.
Subscription price, \$2.00 per year in Advance and Bergen Counties. Elsewhere in U. S. & \$3.00 per year.

THURSDAY, MARCH 25, 1951

...Editorial...

HOW TO SAVE A LIFE

The American Cancer Society has a sensible approach to the problem of how to save lives from a disease which is unknown. Its method is to teach the individual the danger signals of cancer and remind him that although they may not mean cancer, the commonsense reaction is to see his family doctor and make sure. When detected early, cancer can be cured.

Teaching cancer facts, like anything else, relies on repetition. For that reason we are printing—here the seven danger signals that you may have seen in our news columns.

1. Any sore that does not heal.
2. A lump or thickening in the breast or elsewhere.
3. Unusual bleeding or discharge.
4. Any change in a wart or mole.
5. Persistent indigestion or difficulty in swallowing.
6. Persistent hoarseness or cough.
7. Any change in normal bowel habits.

These may mean cancer; they should always mean a visit to your doctor.

The best way to reduce the cancer death toll—estimated at 250,000 persons this year—is to start by saving one life—your own.

Another sensible step is to see to it that the people who are fighting cancer have the funds they need. In addition to wide-spread public and professional education, the American Cancer Society performs many services to cancer patients and Cancer Society performs many services to cancer patients and Cancer Society performs many services to cancer patients.

Another sensible step is to see to it that the people who are fighting cancer have the funds they need. In addition to wide-spread public and professional education, the American Cancer Society performs many services to cancer patients and Cancer Society performs many services to cancer patients and Cancer Society performs many services to cancer patients.

Another sensible step is to see to it that the people who are fighting cancer have the funds they need. In addition to wide-spread public and professional education, the American Cancer Society performs many services to cancer patients and Cancer Society performs many services to cancer patients and Cancer Society performs many services to cancer patients.

Another sensible step is to see to it that the people who are fighting cancer have the funds they need. In addition to wide-spread public and professional education, the American Cancer Society performs many services to cancer patients and Cancer Society performs many services to cancer patients and Cancer Society performs many services to cancer patients.

Another sensible step is to see to it that the people who are fighting cancer have the funds they need. In addition to wide-spread public and professional education, the American Cancer Society performs many services to cancer patients and Cancer Society performs many services to cancer patients and Cancer Society performs many services to cancer patients.

Another sensible step is to see to it that the people who are fighting cancer have the funds they need. In addition to wide-spread public and professional education, the American Cancer Society performs many services to cancer patients and Cancer Society performs many services to cancer patients and Cancer Society performs many services to cancer patients.

Another sensible step is to see to it that the people who are fighting cancer have the funds they need. In addition to wide-spread public and professional education, the American Cancer Society performs many services to cancer patients and Cancer Society performs many services to cancer patients and Cancer Society performs many services to cancer patients.

Another sensible step is to see to it that the people who are fighting cancer have the funds they need. In addition to wide-spread public and professional education, the American Cancer Society performs many services to cancer patients and Cancer Society performs many services to cancer patients and Cancer Society performs many services to cancer patients.

Another sensible step is to see to it that the people who are fighting cancer have the funds they need. In addition to wide-spread public and professional education, the American Cancer Society performs many services to cancer patients and Cancer Society performs many services to cancer patients and Cancer Society performs many services to cancer patients.

Another sensible step is to see to it that the people who are fighting cancer have the funds they need. In addition to wide-spread public and professional education, the American Cancer Society performs many services to cancer patients and Cancer Society performs many services to cancer patients and Cancer Society performs many services to cancer patients.

Another sensible step is to see to it that the people who are fighting cancer have the funds they need. In addition to wide-spread public and professional education, the American Cancer Society performs many services to cancer patients and Cancer Society performs many services to cancer patients and Cancer Society performs many services to cancer patients.

Another sensible step is to see to it that the people who are fighting cancer have the funds they need. In addition to wide-spread public and professional education, the American Cancer Society performs many services to cancer patients and Cancer Society performs many services to cancer patients and Cancer Society performs many services to cancer patients.

Another sensible step is to see to it that the people who are fighting cancer have the funds they need. In addition to wide-spread public and professional education, the American Cancer Society performs many services to cancer patients and Cancer Society performs many services to cancer patients and Cancer Society performs many services to cancer patients.

Another sensible step is to see to it that the people who are fighting cancer have the funds they need. In addition to wide-spread public and professional education, the American Cancer Society performs many services to cancer patients and Cancer Society performs many services to cancer patients and Cancer Society performs many services to cancer patients.

Another sensible step is to see to it that the people who are fighting cancer have the funds they need. In addition to wide-spread public and professional education, the American Cancer Society performs many services to cancer patients and Cancer Society performs many services to cancer patients and Cancer Society performs many services to cancer patients.

Another sensible step is to see to it that the people who are fighting cancer have the funds they need. In addition to wide-spread public and professional education, the American Cancer Society performs many services to cancer patients and Cancer Society performs many services to cancer patients and Cancer Society performs many services to cancer patients.

With U.S. 1st Cavalry Division of Korean Battlefield

Published Every Thursday by

HAWTHORNE PUBLICATIONS, Inc.
463-465 LAFAYETTE AVENUE
HAWTHORNE, N. J.

Editor: JOSEPH MISSONELLI
Telephone: HAWTHORNE 7-3350

Entered as second-class matter November 21, 1924, at the Hawthorne Branch, Paterson, N. J., post office, under the Act of March 3, 1879.
Subscription price, \$2.00 per year in Advance and Bergen Counties. Elsewhere in U. S. & \$3.00 per year.

THURSDAY, MARCH 25, 1951

...Editorial...

HOW TO SAVE A LIFE

The American Cancer Society has a sensible approach to the problem of how to save lives from a disease which is unknown. Its method is to teach the individual the danger signals of cancer and remind him that although they may not mean cancer, the commonsense reaction is to see his family doctor and make sure. When detected early, cancer can be cured.

Teaching cancer facts, like anything else, relies on repetition. For that reason we are printing—here the seven danger signals that you may have seen in our news columns.

1. Any sore that does not heal.
2. A lump or thickening in the breast or elsewhere.
3. Unusual bleeding or discharge.
4. Any change in a wart or mole.
5. Persistent indigestion or difficulty in swallowing.
6. Persistent hoarseness or cough.
7. Any change in normal bowel habits.

These may mean cancer; they should always mean a visit to your doctor.

The best way to reduce the cancer death toll—estimated at 250,000 persons this year—is to start by saving one life—your own.

Another sensible step is to see to it that the people who are fighting cancer have the funds they need. In addition to wide-spread public and professional education, the American Cancer Society performs many services to cancer patients and Cancer Society performs many services to cancer patients and Cancer Society performs many services to cancer patients.

Another sensible step is to see to it that the people who are fighting cancer have the funds they need. In addition to wide-spread public and professional education, the American Cancer Society performs many services to cancer patients and Cancer Society performs many services to cancer patients and Cancer Society performs many services to cancer patients.

Another sensible step is to see to it that the people who are fighting cancer have the funds they need. In addition to wide-spread public and professional education, the American Cancer Society performs many services to cancer patients and Cancer Society performs many services to cancer patients and Cancer Society performs many services to cancer patients.

Another sensible step is to see to it that the people who are fighting cancer have the funds they need. In addition to wide-spread public and professional education, the American Cancer Society performs many services to cancer patients and Cancer Society performs many services to cancer patients and Cancer Society performs many services to cancer patients.

Another sensible step is to see to it that the people who are fighting cancer have the funds they need. In addition to wide-spread public and professional education, the American Cancer Society performs many services to cancer patients and Cancer Society performs many services to cancer patients and Cancer Society performs many services to cancer patients.

Another sensible step is to see to it that the people who are fighting cancer have the funds they need. In addition to wide-spread public and professional education, the American Cancer Society performs many services to cancer patients and Cancer Society performs many services to cancer patients and Cancer Society performs many services to cancer patients.

Another sensible step is to see to it that the people who are fighting cancer have the funds they need. In addition to wide-spread public and professional education, the American Cancer Society performs many services to cancer patients and Cancer Society performs many services to cancer patients and Cancer Society performs many services to cancer patients.

Another sensible step is to see to it that the people who are fighting cancer have the funds they need. In addition to wide-spread public and professional education, the American Cancer Society performs many services to cancer patients and Cancer Society performs many services to cancer patients and Cancer Society performs many services to cancer patients.

Another sensible step is to see to it that the people who are fighting cancer have the funds they need. In addition to wide-spread public and professional education, the American Cancer Society performs many services to cancer patients and Cancer Society performs many services to cancer patients and Cancer Society performs many services to cancer patients.

Another sensible step is to see to it that the people who are fighting cancer have the funds they need. In addition to wide-spread public and professional education, the American Cancer Society performs many services to cancer patients and Cancer Society performs many services to cancer patients and Cancer Society performs many services to cancer patients.

Another sensible step is to see to it that the people who are fighting cancer have the funds they need. In addition to wide-spread public and professional education, the American Cancer Society performs many services to cancer patients and Cancer Society performs many services to cancer patients and Cancer Society performs many services to cancer patients.

Another sensible step is to see to it that the people who are fighting cancer have the funds they need. In addition to wide-spread public and professional education, the American Cancer Society performs many services to cancer patients and Cancer Society performs many services to cancer patients and Cancer Society performs many services to cancer patients.

Another sensible step is to see to it that the people who are fighting cancer have the funds they need. In addition to wide-spread public and professional education, the American Cancer Society performs many services to cancer patients and Cancer Society performs many services to cancer patients and Cancer Society performs many services to cancer patients.

Another sensible step is to see to it that the people who are fighting cancer have the funds they need. In addition to wide-spread public and professional education, the American Cancer Society performs many services to cancer patients and Cancer Society performs many services to cancer patients and Cancer Society performs many services to cancer patients.

Another sensible step is to see to it that the people who are fighting cancer have the funds they need. In addition to wide-spread public and professional education, the American Cancer Society performs many services to cancer patients and Cancer Society performs many services to cancer patients and Cancer Society performs many services to cancer patients.

Another sensible step is to see to it that the people who are fighting cancer have the funds they need. In addition to wide-spread public and professional education, the American Cancer Society performs many services to cancer patients and Cancer Society performs many services to cancer patients and Cancer Society performs many services to cancer patients.

State Finals

(Continued from Page 1)

Desert, Newark, State Chairman, more than 2,000 High School students have participated in local, county and district contests throughout New Jersey this year. The All-City Band and Color Guard of Trenton Post No. 93 will take part in the contest executed. The general public is invited to attend the State Finals without charge.

Stock Car Racing Will Start at Stadium Sunday

New Jersey drivers will be well represented in the entry list when the opening meet of the stock-car auto racing season is presented at Hinchliffe Stadium, Paterson this Sunday afternoon.

When Race Director Harvey Patterson Jr. launches the speed campaign on the Paterson track, the big field which will face the starter on the inaugural program, will include many drivers from the state. Among them are: Ray Cole and Ronnie Kohler will be among the Paterson drivers in the lineup.

The eager and determined Kohler, who has been hitting the stock-jockey this season, has added his list of entrants for the meet which will launch the Hinchliffe Stadium speed campaign.

When Race Director Harvey Patterson Jr. launches the speed campaign on the Paterson track, the big field which will face the starter on the inaugural program, will include many drivers from the state. Among them are: Ray Cole and Ronnie Kohler will be among the Paterson drivers in the lineup.

The eager and determined Kohler, who has been hitting the stock-jockey this season, has added his list of entrants for the meet which will launch the Hinchliffe Stadium speed campaign.

When Race Director Harvey Patterson Jr. launches the speed campaign on the Paterson track, the big field which will face the starter on the inaugural program, will include many drivers from the state. Among them are: Ray Cole and Ronnie Kohler will be among the Paterson drivers in the lineup.

The eager and determined Kohler, who has been hitting the stock-jockey this season, has added his list of entrants for the meet which will launch the Hinchliffe Stadium speed campaign.

When Race Director Harvey Patterson Jr. launches the speed campaign on the Paterson track, the big field which will face the starter on the inaugural program, will include many drivers from the state. Among them are: Ray Cole and Ronnie Kohler will be among the Paterson drivers in the lineup.

The eager and determined Kohler, who has been hitting the stock-jockey this season, has added his list of entrants for the meet which will launch the Hinchliffe Stadium speed campaign.

When Race Director Harvey Patterson Jr. launches the speed campaign on the Paterson track, the big field which will face the starter on the inaugural program, will include many drivers from the state. Among them are: Ray Cole and Ronnie Kohler will be among the Paterson drivers in the lineup.

The eager and determined Kohler, who has been hitting the stock-jockey this season, has added his list of entrants for the meet which will launch the Hinchliffe Stadium speed campaign.

When Race Director Harvey Patterson Jr. launches the speed campaign on the Paterson track, the big field which will face the starter on the inaugural program, will include many drivers from the state. Among them are: Ray Cole and Ronnie Kohler will be among the Paterson drivers in the lineup.

The eager and determined Kohler, who has been hitting the stock-jockey this season, has added his list of entrants for the meet which will launch the Hinchliffe Stadium speed campaign.

When Race Director Harvey Patterson Jr. launches the speed campaign on the Paterson track, the big field which will face the starter on the inaugural program, will include many drivers from the state. Among them are: Ray Cole and Ronnie Kohler will be among the Paterson drivers in the lineup.

The eager and determined Kohler, who has been hitting the stock-jockey this season, has added his list of entrants for the meet which will launch the Hinchliffe Stadium speed campaign.

When Race Director Harvey Patterson Jr. launches the speed campaign on the Paterson track, the big field which will face the starter on the inaugural program, will include many drivers from the state. Among them are: Ray Cole and Ronnie Kohler will be among the Paterson drivers in the lineup.

The eager and determined Kohler, who has been hitting the stock-jockey this season, has added his list of entrants for the meet which will launch the Hinchliffe Stadium speed campaign.

When Race Director Harvey Patterson Jr. launches the speed campaign on the Paterson track, the big field which will face the starter on the inaugural program, will include many drivers from the state. Among them are: Ray Cole and Ronnie Kohler will be among the Paterson drivers in the lineup.

Robot Stops Cars in Test

Improvement in Chevrolet is illustrated by this picture showing the difference in stopping distance between a 1950 and a 1951 car using exactly the same brake pressure. To eliminate the human element, engineers used a mechanical pedal pressure applicator (dial) on both cars. When the foot lever (1) is pressed the piston exerts a constant pressure on the brake (2).

The U. S. blimpous coal industry has never asked for a government subsidy of any kind.

Guests at the Roney Plaza Hotel, Miami Beach, include Mrs. Mary Smith, Mrs. Margaret Cresser.

Railroads collect more than a billion dollars annually for transport of bituminous coal.

On Friday evening, April 5, a white elephant sale will be held at the home of Dorothy Watson, Mrs. Harvey Mott, 40 Franklin Avenue.

Mrs. Glenna Kruse is the chairman of the sale assisted by co-chairmen Mrs. May Brown and Mrs. Margaret Cresser.

Answer to Question No. 1: 1. Exercise alone is futile. While it will reduce weight, because it helps use up water, carbohydrates and fat, exercise also stimulates the appetite. Two exercises help tremendously: (1) pushing one's chair away from the table when seated; (2) turning the head slowly from right to left and back and forth. Second helpings are offered.

Answer to Question No. 2: 1. Because of their happy face, they are actually inviting him to rob her house.

Explaining how pickpockets work with burglars, the article says, "The pickpocket lifts the keys of some prosperous person, has duplicate made, then returns the case and claims a reward. After waiting a few months, to make the robbery look like an inside job, his partner, the burglar, uses the duplicate to loot the house."

Antique Show (Continued from Page 1)

Peter De Ruiter, Mrs. Edgar Gull, Mrs. Clifford Hunt, Mrs. Cornelius Martin, Mrs. Oliver Taintor, Hawthorne ticket representative; Mrs. Maurice Washburn, hospital chairman; Mrs. Theodore Shep, co-chairman of hospital.

Mrs. Armando Di Cenzo, Mrs. W. J. Earl, Mrs. George Phelan, Mrs. Frank Salerno, Mrs. James P. Wood and Mrs. Williams of the faculty will be assistant chairman; Mrs. Charles Bago, Mrs. Charles Bago, Mrs. S. O. Our and Mrs. Robert Penney, program and check room chairman.

John Schmeyer, Silko, Engle, Mrs. Charles Bago, Mrs. S. O. Our and Mrs. Robert Penney, program and check room chairman.

Joseph Feil, John Korting, Sidney Symms and Peter Deliber will conduct the books.

Philharmonic (Continued from Page 1)

Throughout the evening Strauss waltzes will be played for dancing and in the intermissions the entertainment will be enjoyed. The program will begin at 9 P. M. and conclude at 2 A. M.

Committee members include: Mrs. Morocco, chairman; Mrs. W. J. Earl, Mrs. George Phelan, Mrs. Frank Salerno, Mrs. James P. Wood and Mrs. Williams of the faculty will be assistant chairman; Mrs. Charles Bago, Mrs. Charles Bago, Mrs. S. O. Our and Mrs. Robert Penney, program and check room chairman.

John Schmeyer, Silko, Engle, Mrs. Charles Bago, Mrs. S. O. Our and Mrs. Robert Penney, program and check room chairman.

Joseph Feil, John Korting, Sidney Symms and Peter Deliber will conduct the books.

Philharmonic (Continued from Page 1)

Throughout the evening Strauss waltzes will be played for dancing and in the intermissions the entertainment will be enjoyed. The program will begin at 9 P. M. and conclude at 2 A. M.

Committee members include: Mrs. Morocco, chairman; Mrs. W. J. Earl, Mrs. George Phelan, Mrs. Frank Salerno, Mrs. James P. Wood and Mrs. Williams of the faculty will be assistant chairman; Mrs. Charles Bago, Mrs. Charles Bago, Mrs. S. O. Our and Mrs. Robert Penney, program and check room chairman.

John Schmeyer, Silko, Engle, Mrs. Charles Bago, Mrs. S. O. Our and Mrs. Robert Penney, program and check room chairman.

Joseph Feil, John Korting, Sidney Symms and Peter Deliber will conduct the books.

Philharmonic (Continued from Page 1)

Throughout the evening Strauss waltzes will be played for dancing and in the intermissions the entertainment will be enjoyed. The program will begin at 9 P. M. and conclude at 2 A. M.

Committee members include: Mrs. Morocco, chairman; Mrs. W. J. Earl, Mrs. George Phelan, Mrs. Frank Salerno, Mrs. James P. Wood and Mrs. Williams of the faculty will be assistant chairman; Mrs. Charles Bago, Mrs. Charles Bago, Mrs. S. O. Our and Mrs. Robert Penney, program and check room chairman.

John Schmeyer, Silko, Engle, Mrs. Charles Bago, Mrs. S. O. Our and Mrs. Robert Penney, program and check room chairman.

Joseph Feil, John Korting, Sidney Symms and Peter Deliber will conduct the books.

Philharmonic (Continued from Page 1)

Throughout the evening Strauss waltzes will be played for dancing and in the intermissions the entertainment will be enjoyed. The program will begin at 9 P. M. and conclude at 2 A. M.

Committee members include: Mrs. Morocco, chairman; Mrs. W. J. Earl, Mrs. George Phelan, Mrs. Frank Salerno, Mrs. James P. Wood and Mrs. Williams of the faculty will be assistant chairman; Mrs. Charles Bago, Mrs. Charles Bago, Mrs. S. O. Our and Mrs. Robert Penney, program and check room chairman.

John Schmeyer, Silko, Engle, Mrs. Charles Bago, Mrs. S. O. Our and Mrs. Robert Penney, program and check room chairman.

Joseph Feil, John Korting, Sidney Symms and Peter Deliber will conduct the books.

Philharmonic (Continued from Page 1)

Throughout the evening Strauss waltzes will be played for dancing and in the intermissions the entertainment will be enjoyed. The program will begin at 9 P. M. and conclude at 2 A. M.

Committee members include: Mrs. Morocco, chairman; Mrs. W. J. Earl, Mrs. George Phelan, Mrs. Frank Salerno, Mrs. James P. Wood and Mrs. Williams of the faculty will be assistant chairman; Mrs. Charles Bago, Mrs. Charles Bago, Mrs. S. O. Our and Mrs. Robert Penney, program and check room chairman.

John Schmeyer, Silko, Engle, Mrs. Charles Bago, Mrs. S. O. Our and Mrs. Robert Penney, program and check room chairman.

Joseph Feil, John Korting, Sidney Symms and Peter Deliber will conduct the books.

Philharmonic (Continued from Page 1)

Throughout the evening Strauss waltzes will be played for dancing and in the intermissions the entertainment will be enjoyed. The program will begin at 9 P. M. and conclude at 2 A. M.

Committee members include: Mrs. Morocco, chairman; Mrs. W. J. Earl, Mrs. George Phelan, Mrs. Frank Salerno, Mrs. James P. Wood and Mrs. Williams of the faculty will be assistant chairman; Mrs. Charles Bago, Mrs. Charles Bago, Mrs. S. O. Our and Mrs. Robert Penney, program and check room chairman.

John Schmeyer, Silko, Engle, Mrs. Charles Bago, Mrs. S. O. Our and Mrs. Robert Penney, program and check room chairman.

Joseph Feil, John Korting, Sidney Symms and Peter Deliber will conduct the books.

Philharmonic (Continued from Page 1)

Throughout the evening Strauss waltzes will be played for dancing and in the intermissions the entertainment will be enjoyed. The program will begin at 9 P. M. and conclude at 2 A. M.

Committee members include: Mrs. Morocco, chairman; Mrs. W. J. Earl, Mrs. George Phelan, Mrs. Frank Salerno, Mrs. James P. Wood and Mrs. Williams of the faculty will be assistant chairman; Mrs. Charles Bago, Mrs. Charles Bago, Mrs. S. O. Our and Mrs. Robert Penney, program and check room chairman.

John Schmeyer, Silko, Engle, Mrs. Charles Bago, Mrs. S. O. Our and Mrs. Robert Penney, program and check room chairman.

Joseph Feil, John Korting, Sidney Symms and Peter Deliber will conduct the books.

Philharmonic (Continued from Page 1)

Throughout the evening Strauss waltzes will be played for dancing and in the intermissions the entertainment will be enjoyed. The program will begin at 9 P. M. and conclude at 2 A. M.

Committee members include: Mrs. Morocco, chairman; Mrs. W. J. Earl, Mrs. George Phelan, Mrs. Frank Salerno, Mrs. James P. Wood and Mrs. Williams of the faculty will be assistant chairman; Mrs. Charles Bago, Mrs. Charles Bago, Mrs. S. O. Our and Mrs. Robert Penney, program and check room chairman.

John Schmeyer, Silko, Engle, Mrs. Charles Bago, Mrs. S. O. Our and Mrs. Robert Penney, program and check room chairman.

Joseph Feil, John Korting, Sidney Symms and Peter Deliber will conduct the books.

Philharmonic (Continued from Page 1)

Throughout the evening Strauss waltzes will be played for dancing and in the intermissions the entertainment will be enjoyed. The program will begin at 9 P. M. and conclude at 2 A. M.

Committee members include: Mrs. Morocco, chairman; Mrs. W. J. Earl, Mrs. George Phelan, Mrs. Frank Salerno, Mrs. James P. Wood and Mrs. Williams of the faculty will be assistant chairman; Mrs. Charles Bago, Mrs. Charles Bago, Mrs. S. O. Our and Mrs. Robert Penney, program and check room chairman.

John Schmeyer, Silko, Engle, Mrs. Charles Bago, Mrs. S. O. Our and Mrs. Robert Penney, program and check room chairman.

Joseph Feil, John Korting, Sidney Symms and Peter Deliber will conduct the books.

Philharmonic (Continued from Page 1)

Throughout the evening Strauss waltzes will be played for dancing and in the intermissions the entertainment will be enjoyed. The program will begin at 9 P. M. and conclude at 2 A. M.

Committee members include: Mrs. Morocco, chairman; Mrs. W. J. Earl, Mrs. George Phelan, Mrs. Frank Salerno, Mrs. James P. Wood and Mrs. Williams of the faculty will be assistant chairman; Mrs. Charles Bago, Mrs. Charles Bago, Mrs. S. O. Our and Mrs. Robert Penney, program and check room chairman.

John Schmeyer, Silko, Engle, Mrs. Charles Bago, Mrs. S. O. Our and Mrs. Robert Penney, program and check room chairman.

Joseph Feil, John Korting, Sidney Symms and Peter Deliber will conduct the books.

Philharmonic (Continued from Page 1)

Throughout the evening Strauss waltzes will be played for dancing and in the intermissions the entertainment will be enjoyed. The program will begin at 9 P. M. and conclude at 2 A. M.

Committee members include: Mrs. Morocco, chairman; Mrs. W. J. Earl, Mrs. George Phelan, Mrs. Frank Salerno, Mrs. James P. Wood and Mrs. Williams of the faculty will be assistant chairman; Mrs. Charles Bago, Mrs. Charles Bago, Mrs. S. O. Our and Mrs. Robert Penney, program and check room chairman.

John Schmeyer, Silko, Engle, Mrs. Charles Bago, Mrs. S. O. Our and Mrs. Robert Penney, program and check room chairman.

Joseph Feil, John Korting, Sidney Symms and Peter Deliber will conduct the books.

Philharmonic (Continued from Page 1)

Throughout the evening Strauss waltzes will be played for dancing and in the intermissions the entertainment will be enjoyed. The program will begin at 9 P. M. and conclude at 2 A. M.

Committee members include: Mrs. Morocco, chairman; Mrs. W. J. Earl, Mrs. George Phelan, Mrs. Frank Salerno, Mrs. James P. Wood and Mrs. Williams of the faculty will be assistant chairman; Mrs. Charles Bago, Mrs. Charles Bago, Mrs. S. O. Our and Mrs. Robert Penney, program and check room chairman.

John Schmeyer, Silko, Engle, Mrs. Charles Bago, Mrs. S. O. Our and Mrs. Robert Penney, program and check room chairman.

Joseph Feil, John Korting, Sidney Symms and Peter Deliber will conduct the books.

EASTERN STAR PLANS NIGHT OF GAMES

Dorothy Burkart

(Continued from Page 1)

thorne with the Rev. John S. Moore officiating.

The bride was attired in a gown with detachable type lace bodice and a semi high collar, long pointed sleeves, set-in waist band and beaded tulle skirt. She wore a headpiece of a cap of bands of satin with pearls inset between bands and a shoulder length veil.

The matron of honor was Mrs. Arthur H. Schneider, Jr., cousin of the bride who wore a revere green tulle taffeta with a show neckline, a fitted bodice and a full skirt. She wore wrist length cotton gloves and carried a yellow carnation bouquet.

The groom was attended by William L. Brown and ushers were, Edward H. Burkart, Jr.,

brother of the bride and Walter W. Garner, a cousin of the groom.

Peter Kuiper sang "Oh Promise Me" and "The Lord's Prayer."

The bride's mother wore a brown crepe gown with a white collar and rhinestone clip, short sleeves with a white hat with rhinestone clip, toast shoes, white gloves and a green cymbidium corsage.

The groom's mother wore a navy blue crepe dress with a square neckline, lace inset, short sleeves with a white hat with rhinestone clip, toast shoes, white gloves and a green cymbidium corsage.

The church was decorated with palms and sweetpeas in baskets. A reception was held at Robert's Swiss Chalet, Rochelle Park School and the Katherine Gibbs School in New York.

The groom is also a graduate of the Hawthorne Grammar and High Schools and will graduate from the Newark College of Fine Arts and Industrial Art in May.

The bride was given in marriage by her uncle, Ray W. Burkart of Glen Rock.

40 Per Cent

(Continued from Page 1)

year and 6,882 complaints were dismissed.

The average fine imposed, exclusive of mandatory penalties, was \$4.55, a drop from \$6.70 in 1949. In 1948 the average fine was \$4.36.

Due in every four of last year's offenders was a non-revocation as against 29 per cent in 1949 and 34 per cent in 1948.

Classified Adv.

When he and she
Decide to be
A happy 'til family
They seek a nest
With beauty blest
And dress it up
With BARNEY'S best

**3 ROOMS
COMPLETE
For LESS than a
SUITE
\$289**

***No Money Down
24 Months to Pay**

25 Plans in all of
BRAND NEW FURNITURE
Here's what you get:

- * 12 Pc. Living Room
- * 12 Pc. Bedroom Group
- * 11 Pc. Kitchen PLUM

Rebuilt Famous Electric
REFRIGERATOR

*Veterans of World War 2 pay
no money down and get 24
months to pay on purchases up to
\$1000 if eligible under the State
of N.J. Veterans Loan Act;
loans subject to the approval of
the Veterans Loan Authority.
Civilian America can reserve any
Barney Outfit with \$5 and enjoy
Government approved Credit
take up to 65 weeks to pay.

BARNEY'S

55 MAIN ST., PATERSON, N. J.
Open daily 9:30-9 P. M.
Phone MU 2-4000 for
FREE customers car to call.

WANTED TO RENT - Garage
for private car. Call Har-
thorne 7-2220.

COUNTY FLOOR CONTRACTORS - We make old floors look
like new, linoleum, floor cover-
ings, wax, formica sink tops,
plastic tile, floor sanding, etc.
Locals: 730 Lafayette Ave., HAW-
thorne 7-2278; open evenings,
5-9 P. M.

TO LET -
Store to let 2800 East Avenue,
Hawthorne; suitable for any
business. Call Sherwood 2-1222.
Simon H. Glass Inc., 128 Market
St., Paterson, N. J.

Do you have evenings and
Saturday's free? Make \$50-\$100
spare time. Nationally known
company, car, convenient. Phone
Albany 4-1777, 1-4 P. M. If

"A little used
but not abused"
to go for the
UNPAID BALANCE of

\$145

pay-it off only.

32 weekly

BARNEY'S

55 MAIN ST., PATERSON, N. J.

**HILL
DISPLAY CASES**
and Refrigerators - Freezers,
Sinks, Stoves, Choppers,
Harry Page, Inc.,
403 BROAD STREET
PHIL 2-2820 - Paterson, N. J.

Juicy Florida ORANGES 5-lb. 39c
Today's best orange value! Freshly bagged, sun-ripened, juicy Florida. Vitamin rich!

Jersey Apples 4 1/2 lb. 35c	Idaho Potatoes 10 1/2 lb. 49c
Fancy McIntosh Apples 3 lb. 29c	New Red Bliss Potatoes 3 lb. 25c
Grapefruit 2 lb. 25c	Fancy Western Carrots 5 lb. 1 1/8
Yellow Onion Sets 2 lb. 25c	Grass Seed 10c
Pascal Celery 10c	Asparagus 10c
Fancy California Broccoli 29c	

Spam 12-oz. can 45c

Campbell's Beans 16-oz. can 11c

Spanish Rice 12-oz. can 19c

Weish Rarebit 10-oz. jar 43c

Hamburgers 10-oz. jar 59c

Beef Stew 3 1/2 lb. old fashioned 59c

Niblets Corn 2 1/2 lb. 31c

Frying Chickens Fresh Killed lb. 43c
Ready-for-the-Pan Drawn Fryers, lb. 59c—An equal value!

Swift Premium Veal Rolls lb. 79c

Sirloin Steaks 95c

Porterhouse Steaks 99c

Rib Veal Chops 89c

Sliced Beef Liver 75c

Plate Beef 29c

Bacon 2 lb. 67c

Midget Liverwurst 65c

Serve Acme Fresh Frosted Fish
Be modern—get acquainted with convenient, economical, delicious Acme frosted fish. All food, no waste.

Haddock Fillet 45c

Perch Fillet 43c

Scallops 63c

FROZEN FOODS

Seabrook Baby Regularly 20c Special 10-oz. pkg. 23c

Peaches 10-oz. pkg. 25c

Cauliflower 10-oz. pkg. 27c

Cut Corn 10-oz. pkg. 21c

Spinach 10-oz. pkg. 22c

Blueberries 10-oz. pkg. 35c

Strawberries 10-oz. pkg. 43c

Orange Juice 10-oz. can 20c

Ten-da Steaks 10-oz. can 38c

BAKERY

Virginia Leo Special

Angel Food Ring 45c

Chocolate or Vanilla each 45c

Decorative Bar 39c

Danish Pecan Ring 45c

Muffins 21c

Corn Muffins 21c

Bread Supreme Large Loaf 15c

DAIRY

Fancy Domestic Swiss Cheese 1/2-lb. 35c
Feature of the week! You'll enjoy the rich flavor!

Gorgonzola Cheese 75c

Muenster Cheese 55c

Italian Kitchen Parmesan Cheese 19c

Kraft Philadelphia Cream Cheese 17c

Mild Colored Cheddar Cheese 57c

Aged Sharp Cheddar Cheese 65c

Snappy Cheese 20c

Sardo Romano 69c

Evap Milk 2 1/2 lb. 25c

Asco Tea 2 1/2 lb. 27c

Cat Food 3 1/2 lb. 21c

SAVE YOUR VOTES!
Put This 16-inch PHILCO Television Receiver in Your Favorite School!

5-Pc. Silverplate Hostess Set \$1.98

Colored Margarine 1 1/2 lb. 33c

Apple Sauce 14c

Fruit Cocktail 25c

Herb-Ox 2 1/2 lb. 35c

Grape Preserves 2 1/2 lb. 25c

Strawberry Jam 35c

Peanut Butter 39c

Mayonnaise 39c

Royce 19c

Parson's Ammonia 22c

Gold Dust 25c

Woodbury Soap 3 1/2 lb. 27c

Woodbury Soap 2 1/2 lb. 25c

Sweetheart Soap 9c

Sweetheart Soap 2 1/2 lb. 25c

Blu-White 2 1/2 lb. 17c

Hershey's Tasty Soap 3 1/2 lb. 29c

Good Ice Cream Needs Be Expensive!

Dairycrest Ice Cream 29c
So smooth, so creamy! Vanilla, chocolate, strawberry, peach flavors!

Dairycrest Ice Cream Cake-Roll 39c

Acme Markets

OPEN EVERY FRIDAY UNTIL 9 P. M.

Beech-Nut Strained Baby Foods 10 1/2 oz. jar 97c

Beech-Nut Canned Foods 6 1/2 oz. can 85c

Cereal 15c

CRISCO 39c

Wesson Oil 43c

Lifebuoy Soap 9c

Old Dutch Cleanser 12c

Swan Soap 2 1/2 lb. 19c

Lux Toilet Soap 9c

Silver Dust 33c

RINSO 32c

Wilbert Products 35c

Acme Markets

OPEN EVERY FRIDAY UNTIL 9 P. M.

246 Diamond Bridge Ave., Hawthorne