

JUNE

Washington News

J. E. JONES

A SQUARE DEAL IN THE HOOPER WORLD
WASHINGTON, D. C.—Every metropolitan newspaper in the land has reported the big news from Detroit that General Motors and its workers have reached a peaceful and fair-and-square settlement of their differences, which means that the General Motors Corporation and the United Auto Workers CIO have agreed to a five-year contract providing for annual wage increases, pensions and health insurance and forms of security for employees and workers.

This is the first strike in which both sides have hailed the terms of the contract as they were announced in an atmosphere of good will at a joint news conference following a final session of 28 consecutive hours of secret negotiations.

Thus, the employees of General Motors have joined and become a part of the world's greatest producers of automobiles.

No wonder C. E. Wilson, president of General Motors expressed pleasure in his statement that the new contract "is unprecedented in labor management relations."

"It is expected," Mr. Wilson said, "that it will have a stabilizing influence not only on our business, but on the economy of the whole country." But the Stalin Government is mistaken if they fear or possibility of a strike for five years is a tremendous constructive achievement for employees and their families, as well as the motor company, the dealers and suppliers to the general public.

And you can take off your hat and thank your enthusiasm for this settlement which Mr. Wilson is certain will mean that all concerned "can face the future with added confidence."

Walter P. Reuther, international president of the United Automobile Workers, estimated the total gains of the worker during the life of the agreement would exceed \$1,000,000,000. And he, of course, shouts for joy!

In the opinion of the rulers of

the Government of the United States, we will not let down the United Nations.

Former President Theodore Roosevelt wanted to reorganize the Executive Branch of the Government and switch 300,000 employees to places where they could do more work. Today the Government has almost 2,000,000 employees.

That's why former President Herbert Hoover was invited to study the problem of reorganizing the Government. In his report submitted in 1929, the Hoover Commission recommended sweeping changes in Government structure, and outlined ways

The Washington Post rang the bell in an editorial calling all of us to travel "The Road Back to America." It is truly a sad and patriotic cry, and it is truly a sad and patriotic cry, and it is truly a sad and patriotic cry.

The editorial states that "the business, but on the economy of the whole country." But the Stalin Government is mistaken if they fear or possibility of a strike for five years is a tremendous constructive achievement for employees and their families, as well as the motor company, the dealers and suppliers to the general public.

And you can take off your hat and thank your enthusiasm for this settlement which Mr. Wilson is certain will mean that all concerned "can face the future with added confidence."

Walter P. Reuther, international president of the United Automobile Workers, estimated the total gains of the worker during the life of the agreement would exceed \$1,000,000,000. And he, of course, shouts for joy!

In the opinion of the rulers of

for the Government to save \$4 billion a year.

Congress and the President are still in the process of reorganizing the Executive Branch of the Government and switch 300,000 employees to places where they could do more work. Today the Government has almost 2,000,000 employees.

That's why former President Herbert Hoover was invited to study the problem of reorganizing the Government. In his report submitted in 1929, the Hoover Commission recommended sweeping changes in Government structure, and outlined ways

The Washington Post rang the bell in an editorial calling all of us to travel "The Road Back to America." It is truly a sad and patriotic cry, and it is truly a sad and patriotic cry, and it is truly a sad and patriotic cry.

The editorial states that "the business, but on the economy of the whole country." But the Stalin Government is mistaken if they fear or possibility of a strike for five years is a tremendous constructive achievement for employees and their families, as well as the motor company, the dealers and suppliers to the general public.

And you can take off your hat and thank your enthusiasm for this settlement which Mr. Wilson is certain will mean that all concerned "can face the future with added confidence."

Walter P. Reuther, international president of the United Automobile Workers, estimated the total gains of the worker during the life of the agreement would exceed \$1,000,000,000. And he, of course, shouts for joy!

In the opinion of the rulers of

the accusations that have been leveled at them. And perhaps another look had better be taken at the charges of Cuba, Guatemala, and Haiti.

Public Power Varies
Private Industry
Maybe the floods had something to do with it—anyhow, private utilities have decided after taking a licking for the last fifteen years that they will start out in the new future to build up a new billion dollar expansion program of their own.

Workers in American industries—large and small institutions—must be about ready to take notice of an official statement by the Federal Reserve Board in Washington. The Board says there is more job efficiency in the United States than ever before.

There are about 20,000,000 tons of steel rails in use in the United States over which nearly three billion revenue tons are hauled each year.

Missouri Churchman at Clergy Institute

NEW BRUNSWICK — Rev. Gene W. Wetherell, whose work with rural churches in Missouri has gained national recognition, will speak at the Institute for Town and Country Ministers next Monday, Tuesday and Wednesday at the College of Agriculture, Rutgers University.

An extension minister for the Bible College of Missouri, the Rev. Wetherell holds a unique position. He travels extensively through Missouri, studying needs of rural churches and talking with farm groups. He is building a program based on the philosophy that a rural minister should have a thorough knowledge of the needs of the people in his church community.

Besides being available for consultation by those who attend the Institute, Rev. Mr. Wetherell will speak three times. His topics will be "The Rural Church and Its Community," "A Program for the Community," and "Training and Preparation for the Rural Minister."

The program arranged by Charles A. Thompson of the Extension Service at the College of Agriculture, includes a discussion of migrant labor relations by Rev. Harrison R. Thompson of the University of Missouri, and "Training and Preparation for the Rural Minister" by J. A. O'Malley, general sales manager of the Chrysler Division.

Popularity of the Chrysler "hardtop" styling has now been made available in Chrysler's New Yorker and Windsor lines. The sleek body style, shown here in the New Yorker, features the "hardtop" rear window which curves well into the sedan with the assurance of the convertible. Open-

er effect is accentuated by side windows and windows in Chrysler's New Yorker and Windsor lines. Maximum rearward vision is provided by the "hardtop" rear window which curves well into the sedan with the assurance of the convertible. Open-

er effect is accentuated by side windows and windows in Chrysler's New Yorker and Windsor lines. Maximum rearward vision is provided by the "hardtop" rear window which curves well into the sedan with the assurance of the convertible. Open-

er effect is accentuated by side windows and windows in Chrysler's New Yorker and Windsor lines. Maximum rearward vision is provided by the "hardtop" rear window which curves well into the sedan with the assurance of the convertible. Open-

er effect is accentuated by side windows and windows in Chrysler's New Yorker and Windsor lines. Maximum rearward vision is provided by the "hardtop" rear window which curves well into the sedan with the assurance of the convertible. Open-

er effect is accentuated by side windows and windows in Chrysler's New Yorker and Windsor lines. Maximum rearward vision is provided by the "hardtop" rear window which curves well into the sedan with the assurance of the convertible. Open-

er effect is accentuated by side windows and windows in Chrysler's New Yorker and Windsor lines. Maximum rearward vision is provided by the "hardtop" rear window which curves well into the sedan with the assurance of the convertible. Open-

er effect is accentuated by side windows and windows in Chrysler's New Yorker and Windsor lines. Maximum rearward vision is provided by the "hardtop" rear window which curves well into the sedan with the assurance of the convertible. Open-

er effect is accentuated by side windows and windows in Chrysler's New Yorker and Windsor lines. Maximum rearward vision is provided by the "hardtop" rear window which curves well into the sedan with the assurance of the convertible. Open-

er effect is accentuated by side windows and windows in Chrysler's New Yorker and Windsor lines. Maximum rearward vision is provided by the "hardtop" rear window which curves well into the sedan with the assurance of the convertible. Open-

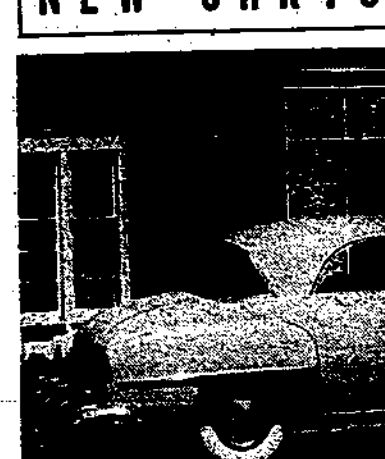
er effect is accentuated by side windows and windows in Chrysler's New Yorker and Windsor lines. Maximum rearward vision is provided by the "hardtop" rear window which curves well into the sedan with the assurance of the convertible. Open-

er effect is accentuated by side windows and windows in Chrysler's New Yorker and Windsor lines. Maximum rearward vision is provided by the "hardtop" rear window which curves well into the sedan with the assurance of the convertible. Open-

er effect is accentuated by side windows and windows in Chrysler's New Yorker and Windsor lines. Maximum rearward vision is provided by the "hardtop" rear window which curves well into the sedan with the assurance of the convertible. Open-

er effect is accentuated by side windows and windows in Chrysler's New Yorker and Windsor lines. Maximum rearward vision is provided by the "hardtop" rear window which curves well into the sedan with the assurance of the convertible. Open-

NEW CHRYSLER "HARDTOP"



Popular "hardtop" styling has now been made available in Chrysler's New Yorker and Windsor lines. The sleek body style, shown here in the New Yorker, features the "hardtop" rear window which curves well into the sedan with the assurance of the convertible. Open-

er effect is accentuated by side windows and windows in Chrysler's New Yorker and Windsor lines. Maximum rearward vision is provided by the "hardtop" rear window which curves well into the sedan with the assurance of the convertible. Open-

er effect is accentuated by side windows and windows in Chrysler's New Yorker and Windsor lines. Maximum rearward vision is provided by the "hardtop" rear window which curves well into the sedan with the assurance of the convertible. Open-

er effect is accentuated by side windows and windows in Chrysler's New Yorker and Windsor lines. Maximum rearward vision is provided by the "hardtop" rear window which curves well into the sedan with the assurance of the convertible. Open-

er effect is accentuated by side windows and windows in Chrysler's New Yorker and Windsor lines. Maximum rearward vision is provided by the "hardtop" rear window which curves well into the sedan with the assurance of the convertible. Open-

er effect is accentuated by side windows and windows in Chrysler's New Yorker and Windsor lines. Maximum rearward vision is provided by the "hardtop" rear window which curves well into the sedan with the assurance of the convertible. Open-

er effect is accentuated by side windows and windows in Chrysler's New Yorker and Windsor lines. Maximum rearward vision is provided by the "hardtop" rear window which curves well into the sedan with the assurance of the convertible. Open-

er effect is accentuated by side windows and windows in Chrysler's New Yorker and Windsor lines. Maximum rearward vision is provided by the "hardtop" rear window which curves well into the sedan with the assurance of the convertible. Open-

er effect is accentuated by side windows and windows in Chrysler's New Yorker and Windsor lines. Maximum rearward vision is provided by the "hardtop" rear window which curves well into the sedan with the assurance of the convertible. Open-

er effect is accentuated by side windows and windows in Chrysler's New Yorker and Windsor lines. Maximum rearward vision is provided by the "hardtop" rear window which curves well into the sedan with the assurance of the convertible. Open-

er effect is accentuated by side windows and windows in Chrysler's New Yorker and Windsor lines. Maximum rearward vision is provided by the "hardtop" rear window which curves well into the sedan with the assurance of the convertible. Open-

er effect is accentuated by side windows and windows in Chrysler's New Yorker and Windsor lines. Maximum rearward vision is provided by the "hardtop" rear window which curves well into the sedan with the assurance of the convertible. Open-

er effect is accentuated by side windows and windows in Chrysler's New Yorker and Windsor lines. Maximum rearward vision is provided by the "hardtop" rear window which curves well into the sedan with the assurance of the convertible. Open-

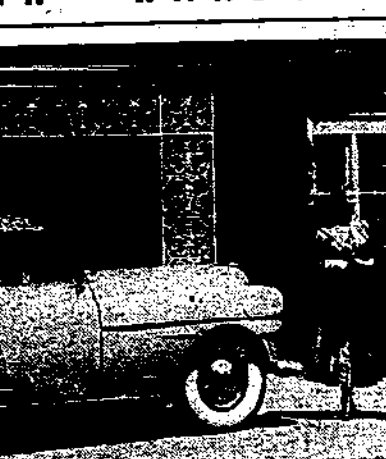
er effect is accentuated by side windows and windows in Chrysler's New Yorker and Windsor lines. Maximum rearward vision is provided by the "hardtop" rear window which curves well into the sedan with the assurance of the convertible. Open-

er effect is accentuated by side windows and windows in Chrysler's New Yorker and Windsor lines. Maximum rearward vision is provided by the "hardtop" rear window which curves well into the sedan with the assurance of the convertible. Open-

er effect is accentuated by side windows and windows in Chrysler's New Yorker and Windsor lines. Maximum rearward vision is provided by the "hardtop" rear window which curves well into the sedan with the assurance of the convertible. Open-

er effect is accentuated by side windows and windows in Chrysler's New Yorker and Windsor lines. Maximum rearward vision is provided by the "hardtop" rear window which curves well into the sedan with the assurance of the convertible. Open-

Look! DORSET MEANS Double Goodness NOW!



Look! DORSET MEANS Double Goodness NOW! You help the DORSET RATIONING BOARD with DORSET LABELS! YOU ALWAYS GET DELICIOUS, READY-TO-SERVE FOODS!

Look! DORSET MEANS Double Goodness NOW! You help the DORSET RATIONING BOARD with DORSET LABELS! YOU ALWAYS GET DELICIOUS, READY-TO-SERVE FOODS!

Look! DORSET MEANS Double Goodness NOW! You help the DORSET RATIONING BOARD with DORSET LABELS! YOU ALWAYS GET DELICIOUS, READY-TO-SERVE FOODS!

Look! DORSET MEANS Double Goodness NOW! You help the DORSET RATIONING BOARD with DORSET LABELS! YOU ALWAYS GET DELICIOUS, READY-TO-SERVE FOODS!

Look! DORSET MEANS Double Goodness NOW! You help the DORSET RATIONING BOARD with DORSET LABELS! YOU ALWAYS GET DELICIOUS, READY-TO-SERVE FOODS!

Look! DORSET MEANS Double Goodness NOW! You help the DORSET RATIONING BOARD with DORSET LABELS! YOU ALWAYS GET DELICIOUS, READY-TO-SERVE FOODS!

Look! DORSET MEANS Double Goodness NOW! You help the DORSET RATIONING BOARD with DORSET LABELS! YOU ALWAYS GET DELICIOUS, READY-TO-SERVE FOODS!

Look! DORSET MEANS Double Goodness NOW! You help the DORSET RATIONING BOARD with DORSET LABELS! YOU ALWAYS GET DELICIOUS, READY-TO-SERVE FOODS!

Look! DORSET MEANS Double Goodness NOW! You help the DORSET RATIONING BOARD with DORSET LABELS! YOU ALWAYS GET DELICIOUS, READY-TO-SERVE FOODS!

Look! DORSET MEANS Double Goodness NOW! You help the DORSET RATIONING BOARD with DORSET LABELS! YOU ALWAYS GET DELICIOUS, READY-TO-SERVE FOODS!

Look! DORSET MEANS Double Goodness NOW! You help the DORSET RATIONING BOARD with DORSET LABELS! YOU ALWAYS GET DELICIOUS, READY-TO-SERVE FOODS!

Look! DORSET MEANS Double Goodness NOW! You help the DORSET RATIONING BOARD with DORSET LABELS! YOU ALWAYS GET DELICIOUS, READY-TO-SERVE FOODS!

Look! DORSET MEANS Double Goodness NOW! You help the DORSET RATIONING BOARD with DORSET LABELS! YOU ALWAYS GET DELICIOUS, READY-TO-SERVE FOODS!

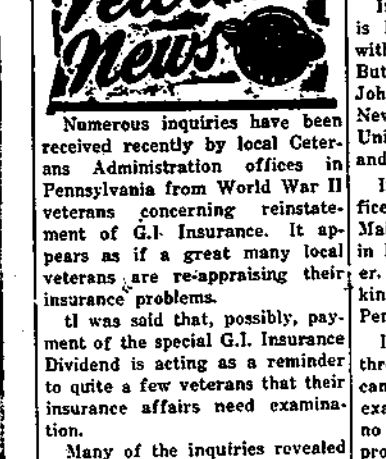
Look! DORSET MEANS Double Goodness NOW! You help the DORSET RATIONING BOARD with DORSET LABELS! YOU ALWAYS GET DELICIOUS, READY-TO-SERVE FOODS!

Look! DORSET MEANS Double Goodness NOW! You help the DORSET RATIONING BOARD with DORSET LABELS! YOU ALWAYS GET DELICIOUS, READY-TO-SERVE FOODS!

Look! DORSET MEANS Double Goodness NOW! You help the DORSET RATIONING BOARD with DORSET LABELS! YOU ALWAYS GET DELICIOUS, READY-TO-SERVE FOODS!

Look! DORSET MEANS Double Goodness NOW! You help the DORSET RATIONING BOARD with DORSET LABELS! YOU ALWAYS GET DELICIOUS, READY-TO-SERVE FOODS!

Who Says You Can't Change Your Face



Who Says You Can't Change Your Face? You can! Look at the same old face in the mirror every day? Then change it with Dorset's "Dorset" facial treatment. Maybe you can't alter the bone structure, but the develop-

ment of the face and skin which is seen by the public is completely in your hands. The great enemy of the face, next to a mean disposition, is poor skin. Skin is the face's most vulnerable point. It is the face's most vulnerable point. It is the face's most vulnerable point.

ment of the face and skin which is seen by the public is completely in your hands. The great enemy of the face, next to a mean disposition, is poor skin. Skin is the face's most vulnerable point. It is the face's most vulnerable point. It is the face's most vulnerable point.

ment of the face and skin which is seen by the public is completely in your hands. The great enemy of the face, next to a mean disposition, is poor skin. Skin is the face's most vulnerable point. It is the face's most vulnerable point. It is the face's most vulnerable point.

ment of the face and skin which is seen by the public is completely in your hands. The great enemy of the face, next to a mean disposition, is poor skin. Skin is the face's most vulnerable point. It is the face's most vulnerable point. It is the face's most vulnerable point.

ment of the face and skin which is seen by the public is completely in your hands. The great enemy of the face, next to a mean disposition, is poor skin. Skin is the face's most vulnerable point. It is the face's most vulnerable point. It is the face's most vulnerable point.

ment of the face and skin which is seen by the public is completely in your hands. The great enemy of the face, next to a mean disposition, is poor skin. Skin is the face's most vulnerable point. It is the face's most vulnerable point. It is the face's most vulnerable point.

ment of the face and skin which is seen by the public is completely in your hands. The great enemy of the face, next to a mean disposition, is poor skin. Skin is the face's most vulnerable point. It is the face's most vulnerable point. It is the face's most vulnerable point.

ment of the face and skin which is seen by the public is completely in your hands. The great enemy of the face, next to a mean disposition, is poor skin. Skin is the face's most vulnerable point. It is the face's most vulnerable point. It is the face's most vulnerable point.

ment of the face and skin which is seen by the public is completely in your hands. The great enemy of the face, next to a mean disposition, is poor skin. Skin is the face's most vulnerable point. It is the face's most vulnerable point. It is the face's most vulnerable point.

ment of the face and skin which is seen by the public is completely in your hands. The great enemy of the face, next to a mean disposition, is poor skin. Skin is the face's most vulnerable point. It is the face's most vulnerable point. It is the face's most vulnerable point.

ment of the face and skin which is seen by the public is completely in your hands. The great enemy of the face, next to a mean disposition, is poor skin. Skin is the face's most vulnerable point. It is the face's most vulnerable point. It is the face's most vulnerable point.

ment of the face and skin which is seen by the public is completely in your hands. The great enemy of the face, next to a mean disposition, is poor skin. Skin is the face's most vulnerable point. It is the face's most vulnerable point. It is the face's most vulnerable point.

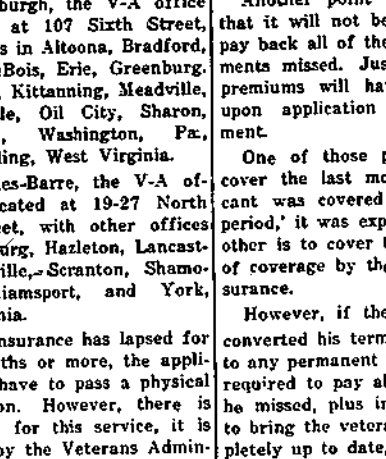
ment of the face and skin which is seen by the public is completely in your hands. The great enemy of the face, next to a mean disposition, is poor skin. Skin is the face's most vulnerable point. It is the face's most vulnerable point. It is the face's most vulnerable point.

ment of the face and skin which is seen by the public is completely in your hands. The great enemy of the face, next to a mean disposition, is poor skin. Skin is the face's most vulnerable point. It is the face's most vulnerable point. It is the face's most vulnerable point.

ment of the face and skin which is seen by the public is completely in your hands. The great enemy of the face, next to a mean disposition, is poor skin. Skin is the face's most vulnerable point. It is the face's most vulnerable point. It is the face's most vulnerable point.

ment of the face and skin which is seen by the public is completely in your hands. The great enemy of the face, next to a mean disposition, is poor skin. Skin is the face's most vulnerable point. It is the face's most vulnerable point. It is the face's most vulnerable point.

We Do Printing of All Kinds



Tickets
Billheads
Programs
Envelopes
Statements
Letterheads
Index Cards
Record Blanks
Business Cards
Circular Letters
Special Ruling

CALL
The Hawthorne Press
Phone Hawthorne 7-3330

Beautiful model of a great idea!

Look, and you see beauty! New trend-making, pace-setting beauty inside and out! Then look deeper... beneath the surface! There's where you find an even greater different Great engineering—solid quality of construction. The great Chrysler idea that means new pleasure in the comfort of a car... a new solidness in the durability and safety and convenience of a car! Look closer still! At the workmanship... at the quality of the materials... at the value of the way through that only Chrysler offers. That's what you pay for... and that's what pays you back! Come look... take the wheel... drive... there's nothing like this Chrysler.

Beautiful model of a great idea!

Look, and you see beauty! New trend-making, pace-setting beauty inside and out! Then look deeper... beneath the surface! There's where you find an even greater different Great engineering—solid quality of construction. The great Chrysler idea that means new pleasure in the comfort of a car... a new solidness in the durability and safety and convenience of a car! Look closer still! At the workmanship... at the quality of the materials... at the value of the way through that only Chrysler offers. That's what you pay for... and that's what pays you back! Come look... take the wheel... drive... there's nothing like this Chrysler.

Beautiful model of a great idea!

Look, and you see beauty! New trend-making, pace-setting beauty inside and out! Then look deeper... beneath the surface! There's where you find an even greater different Great engineering—solid quality of construction. The great Chrysler idea that means new pleasure in the comfort of a car... a new solidness in the durability and safety and convenience of a car! Look closer still! At the workmanship... at the quality of the materials... at the value of the way through that only Chrysler offers. That's what you pay for... and that's what pays you back! Come look... take the wheel... drive... there's nothing like this Chrysler.

Beautiful model of a great idea!

Look, and you see beauty! New trend-making, pace-setting beauty inside and out! Then look deeper... beneath the surface! There's where you find an even greater different Great engineering—solid quality of construction. The great Chrysler idea that means new pleasure in the comfort of a car... a new solidness in the durability and safety and convenience of a car! Look closer still! At the workmanship... at the quality of the materials... at the value of the way through that only Chrysler offers. That's what you pay for... and that's what pays you back! Come look... take the wheel... drive... there's nothing like this Chrysler.

Beautiful model of a great idea!

Look, and you see beauty! New trend-making, pace-setting beauty inside and out! Then look deeper... beneath the surface! There's where you find an even greater different Great engineering—solid quality of construction. The great Chrysler idea that means new pleasure in the comfort of a car... a new solidness in the durability and safety and convenience of a car! Look closer still! At the workmanship... at the quality of the materials... at the value of the way through that only Chrysler offers. That's what you pay for... and that's what pays you back! Come look... take the wheel... drive... there's nothing like this Chrysler.

Beautiful model of a great idea!

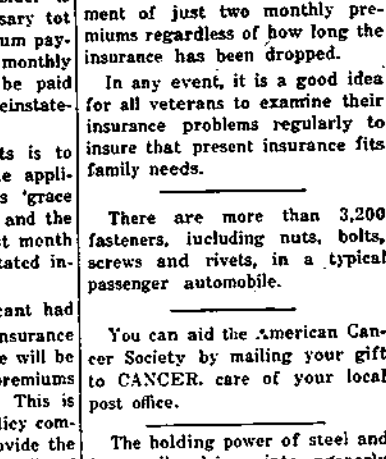
Look, and you see beauty! New trend-making, pace-setting beauty inside and out! Then look deeper... beneath the surface! There's where you find an even greater different Great engineering—solid quality of construction. The great Chrysler idea that means new pleasure in the comfort of a car... a new solidness in the durability and safety and convenience of a car! Look closer still! At the workmanship... at the quality of the materials... at the value of the way through that only Chrysler offers. That's what you pay for... and that's what pays you back! Come look... take the wheel... drive... there's nothing like this Chrysler.

Beautiful model of a great idea!

Look, and you see beauty! New trend-making, pace-setting beauty inside and out! Then look deeper... beneath the surface! There's where you find an even greater different Great engineering—solid quality of construction. The great Chrysler idea that means new pleasure in the comfort of a car... a new solidness in the durability and safety and convenience of a car! Look closer still! At the workmanship... at the quality of the materials... at the value of the way through that only Chrysler offers. That's what you pay for... and that's what pays you back! Come look... take the wheel... drive... there's nothing like this Chrysler.

Beautiful model of a great idea!

Chrysler Driving Advantages



Chrysler Driving Advantages:
Chrysler's new "hardtop" styling has now been made available in Chrysler's New Yorker and Windsor lines. The sleek body style, shown here in the New Yorker, features the "hardtop" rear window which curves well into the sedan with the assurance of the convertible. Open-

er effect is accentuated by side windows and windows in Chrysler's New Yorker and Windsor lines. Maximum rearward vision is provided by the "hardtop" rear window which curves well into the sedan with the assurance of the convertible. Open-

er effect is accentuated by side windows and windows in Chrysler's New Yorker and Windsor lines. Maximum rearward vision is provided by the "hardtop" rear window which curves well into the sedan with the assurance of the convertible. Open-

er effect is accentuated by side windows and windows in Chrysler's New Yorker and Windsor lines. Maximum rearward vision is provided by the "hardtop" rear window which curves well into the sedan with the assurance of the convertible. Open-

er effect is accentuated by side windows and windows in Chrysler's New Yorker and Windsor lines. Maximum rearward vision is provided by the "hardtop" rear window which curves well into the sedan with the assurance of the convertible. Open-

er effect is accentuated by side windows and windows in Chrysler's New Yorker and Windsor lines. Maximum rearward vision is provided by the "hardtop" rear window which curves well into the sedan with the assurance of the convertible. Open-

er effect is accentuated by side windows and windows in Chrysler's New Yorker and Windsor lines. Maximum rearward vision is provided by the "hardtop" rear window which curves well into the sedan with the assurance of the convertible. Open-

er effect is accentuated by side windows and windows in Chrysler's New Yorker and Windsor lines. Maximum rearward vision is provided by the "hardtop" rear window which curves well into the sedan with the assurance of the convertible. Open-

er effect is accentuated by side windows and windows in Chrysler's New Yorker and Windsor lines. Maximum rearward vision is provided by the "hardtop" rear window which curves well into the sedan with the assurance of the convertible. Open-

er effect is accentuated by side windows and windows in Chrysler's New Yorker and Windsor lines. Maximum rearward vision is provided by the "hardtop" rear window which curves well into the sedan with the assurance of the convertible. Open-

er effect is accentuated by side windows and windows in Chrysler's New Yorker and Windsor lines. Maximum rearward vision is provided by the "hardtop" rear window which curves well into the sedan with the assurance of the convertible. Open-

er effect is accentuated by side windows and windows in Chrysler's New Yorker and Windsor lines. Maximum rearward vision is provided by the "hardtop" rear window which curves well into the sedan with the assurance of the convertible. Open-

er effect is accentuated by side windows and windows in Chrysler's New Yorker and Windsor lines. Maximum rearward vision is provided by the "hardtop" rear window which curves well into the sedan with the assurance of the convertible. Open-

er effect is accentuated by side windows and windows in Chrysler's New Yorker and Windsor lines. Maximum rearward vision is provided by the "hardtop" rear window which curves well into the sedan with the assurance of the convertible. Open-

er effect is accentuated by side windows and windows in Chrysler's New Yorker and Windsor lines. Maximum rearward vision is provided by the "hardtop" rear window which curves well into the sedan with the assurance of the convertible. Open-

er effect is accentuated by side windows and windows in Chrysler's New Yorker and Windsor lines. Maximum rearward vision is provided by the "hardtop" rear window which curves well into the sedan with the assurance of the convertible. Open-

er effect is accentuated by side windows and windows in Chrysler's New Yorker and Windsor lines. Maximum rearward vision is provided by the "hardtop" rear window which curves well into the sedan with the assurance of the convertible. Open-

Chrysler Comfort Advantages

...Economic Highlights...

In a column appearing in the other communist states. They have turned back the clock. Slave labor is commonplace, the standard of living is incredibly low, and fear and terror rule. When Marx lived, the concentration of power that produced these conditions was held by industry and commerce. Now, in the communist countries, it is in the hands of the government. It is a fact, it is infinitely more difficult to correct.

Even the trade-unions, which did so much to better the lot of working people, particularly in the early days, have been victims of communist policies. In Russia and her satellite states, they exist without organization or protection, when most employers actually exploit their employees, when business morality as we know it today was not dreamed of.

"Private ownership of the means of production and profits seemed, helpful to Marx, because at that time, in Europe and in England, there was no evidence that the system could ever create the conditions of social justice that Marx desired."

Mr. Hobbell observes there is much more to the Marxian theory than just this. However, as he says further, there is good reason for believing that Marx today would be anti-communist and anti-Russian.

Tree Culture Rutgers Topic On June 14

NEW BRUNSWICK — How much more to the Marxian theory than just this. However, as he says further, there is good reason for believing that Marx today would be anti-communist and anti-Russian.



Best! Wanna buy it cheap?

EVEN in these enlightened days, some poor sucker or other is being sold the Brooklyn Bridge. Or a gold brick. Or a money-printing machine. No kidding.

And yet, it's only because it's human to want to make money in a hurry in order to enjoy Life's Finer Things. Usually it can't be done. Not that way.

The way to enjoy Life's Finer Things is to save for them. And one of the finest ways to save money is to stick some of your salary into U.S. Savings Bonds regularly.

Even better than that is to have it done for you.

Automatically and painlessly. For instance, through the Payroll Savings Plan where you work. Your U. S. Savings Bonds investments come out of your salary, and you don't even notice when it happens.

Or, if you're not on anybody's payroll, use the Bond-A-Month Plan at the bank where you have your checking account. Speak to your friend, the teller. He'll test you straight on this convenient plan.

But for goodness sake, don't buy a bridge. And forget about printing machines. Don't waste your money. Save it—and in ten years you'll enjoy the harvest.

Save for your financial independence—Buy U.S. Savings Bonds

Hawthorne Publications, Inc.

LEGAL NOTICE

NOTICE OF APPLICATION

Take notice that Thomas A. ...

... of the Board of Commissioners of the Borough of ...

... of the Borough of ...

... of the Borough of ...

... of the Borough of ...

... of the Borough of ...

... of the Borough of ...

... of the Borough of ...

... of the Borough of ...

... of the Borough of ...

... of the Borough of ...

... of the Borough of ...

... of the Borough of ...

... of the Borough of ...

... of the Borough of ...

... of the Borough of ...

... of the Borough of ...

... of the Borough of ...

... of the Borough of ...

... of the Borough of ...

... of the Borough of ...

... of the Borough of ...

... of the Borough of ...

... of the Borough of ...

... of the Borough of ...

... of the Borough of ...

... of the Borough of ...

... of the Borough of ...

... of the Borough of ...

... of the Borough of ...

... of the Borough of ...

... of the Borough of ...

... of the Borough of ...

... of the Borough of ...

... of the Borough of ...

... of the Borough of ...

... of the Borough of ...

... of the Borough of ...

... of the Borough of ...

... of the Borough of ...

... of the Borough of ...

... of the Borough of ...

... of the Borough of ...

... of the Borough of ...

... of the Borough of ...

... of the Borough of ...

... of the Borough of ...

... of the Borough of ...

... of the Borough of ...

... of the Borough of ...

... of the Borough of ...

... of the Borough of ...

... of the Borough of ...

... of the Borough of ...

... of the Borough of ...

... of the Borough of ...

... of the Borough of ...

... of the Borough of ...

... of the Borough of ...

... of the Borough of ...

... of the Borough of ...

... of the Borough of ...

... of the Borough of ...

... of the Borough of ...

... of the Borough of ...

... of the Borough of ...

... of the Borough of ...

... of the Borough of ...

... of the Borough of ...

... of the Borough of ...

... of the Borough of ...

... of the Borough of ...

... of the Borough of ...

... of the Borough of ...

... of the Borough of ...

... of the Borough of ...

... of the Borough of ...

... of the Borough of ...

... of the Borough of ...

... of the Borough of ...

... of the Borough of ...

... of the Borough of ...

... of the Borough of ...

... of the Borough of ...

... of the Borough of ...

... of the Borough of ...

... of the Borough of ...

... of the Borough of ...

... of the Borough of ...

... of the Borough of ...

... of the Borough of ...

... of the Borough of ...

... of the Borough of ...

... of the Borough of ...

... of the Borough of ...

... of the Borough of ...

... of the Borough of ...

... of the Borough of ...

... of the Borough of ...

... of the Borough of ...

... of the Borough of ...

... of the Borough of ...

... of the Borough of ...

... of the Borough of ...

... of the Borough of ...

... of the Borough of ...

... of the Borough of ...

... of the Borough of ...

... of the Borough of ...

... of the Borough of ...

... of the Borough of ...

... of the Borough of ...

... of the Borough of ...

... of the Borough of ...

... of the Borough of ...

... of the Borough of ...

... of the Borough of ...

... of the Borough of ...

... of the Borough of ...

... of the Borough of ...

... of the Borough of ...

... of the Borough of ...

LEGAL ADVERTISEMENT

NOTICE OF APPLICATION

Take notice that Thomas A. ...

... of the Board of Commissioners of the Borough of ...

... of the Borough of ...

... of the Borough of ...

... of the Borough of ...

... of the Borough of ...

... of the Borough of ...

... of the Borough of ...

... of the Borough of ...

... of the Borough of ...

... of the Borough of ...

... of the Borough of ...

... of the Borough of ...

... of the Borough of ...

... of the Borough of ...

... of the Borough of ...

... of the Borough of ...

... of the Borough of ...

... of the Borough of ...

... of the Borough of ...

... of the Borough of ...

... of the Borough of ...

... of the Borough of ...

... of the Borough of ...

... of the Borough of ...

... of the Borough of ...

... of the Borough of ...

... of the Borough of ...

... of the Borough of ...

... of the Borough of ...

... of the Borough of ...

... of the Borough of ...

... of the Borough of ...

... of the Borough of ...

... of the Borough of ...

... of the Borough of ...

... of the Borough of ...

... of the Borough of ...

... of the Borough of ...

... of the Borough of ...

... of the Borough of ...

... of the Borough of ...

... of the Borough of ...

... of the Borough of ...

... of the Borough of ...

... of the Borough of ...

... of the Borough of ...

... of the Borough of ...

... of the Borough of ...

... of the Borough of ...

... of the Borough of ...

... of the Borough of ...

... of the Borough of ...

... of the Borough of ...

... of the Borough of ...

... of the Borough of ...

... of the Borough of ...

... of the Borough of ...

... of the Borough of ...

... of the Borough of ...

... of the Borough of ...

... of the Borough of ...

... of the Borough of ...

... of the Borough of ...

... of the Borough of ...

... of the Borough of ...

... of the Borough of ...

... of the Borough of ...

... of the Borough of ...

... of the Borough of ...

... of the Borough of ...

... of the Borough of ...

... of the Borough of ...

... of the Borough of ...

... of the Borough of ...

... of the Borough of ...

... of the Borough of ...

... of the Borough of ...

... of the Borough of ...

... of the Borough of ...

... of the Borough of ...

... of the Borough of ...

... of the Borough of ...

... of the Borough of ...

... of the Borough of ...

... of the Borough of ...

... of the Borough of ...

... of the Borough of ...

... of the Borough of ...

... of the Borough of ...

... of the Borough of ...

... of the Borough of ...

... of the Borough of ...

... of the Borough of ...

... of the Borough of ...

... of the Borough of ...

... of the Borough of ...

... of the Borough of ...

... of the Borough of ...

... of the Borough of ...

... of the Borough of ...

... of the Borough of ...

... of the Borough of ...

... of the Borough of ...

... of the Borough of ...

... of the Borough of ...

... of the Borough of ...

... of the Borough of ...

... of the Borough of ...

... of the Borough of ...

... of the Borough of ...

... of the Borough of ...

... of the Borough of ...

... of the Borough of ...

... of the Borough of ...

... of the Borough of ...

... of the Borough of ...

... of the Borough of ...

... of the Borough of ...

... of the Borough of ...

... of the Borough of ...

... of the Borough of ...

LEGAL ADVERTISEMENT

NOTICE OF APPLICATION

Take notice that Thomas A. ...

... of the Board of Commissioners of the Borough of ...

... of the Borough of ...

... of the Borough of ...

... of the Borough of ...

... of the Borough of ...

... of the Borough of ...

... of the Borough of ...

AMUSEMENTS HAWTHORNE

AIR CONDITIONED
Thursday, Friday & Saturday
June 23-25-26
Susan Hayward, Dana Andrews
in
"MY FOOLISH HEART"
also
"MILITARY ACADEMY"
Sat. Mat. "Military Academy"
— 3 cartoons, Country & "Cody
of the Pony Express"

Sunday Through Wednesday
June 25-26-27-28
BETTY GRABLE in
Her latest Technicolor Musical
Romance
"WABASH AVENUE"
with Victor Mature
Second Feature
"PIRATES OF CAPRI"
with Louis Hayward
Thursday Through Saturday
June 28-30, July 1
Rosalind Russell
"TELL IT TO THE JUDGE"
also
Randolph Scott
"FIGHTING MAN
OF THE PLAINS"

Classified Adv.
TRANSFERRED
to another job
out of the state
3 Rooms of High Grade
**FURNITURE
RETURNED**
to be resold for the
Unpaid Balance
\$175
NO DEPOSIT REQUIRED
Just continue payments
of \$1.75 a week on
ACCOUNT NO. 7556
Bedroom, Living Room
and Kitchen with most
needed accessories...
Condition—Like NEW
see this Office at

**BARNEY'S
RESALE DEPT.**
55 Main Street
Paterson

**HILL
DISPLAY CASES**
and Refrigerators - Freezers
Scales, Slicers, Choppers.
Harry Page, Inc.
343 RIVER STREET
St. 2-1509 Paterson, N. J.

16th Annual
(Continued from Page 1)

tioned. "Knowledge changes atti-
tude and concept for alien na-
tions to a respect for unfamiliar
ways. We must remember the fal-
lacies of our own democracy and
the steps that must be taken to
correct them."

"We must do some soul-search-
ing," he said. "We must remedy
conditions at home, and then
strive to convert the peoples of
the world to the democratic way
of life."

The American Legion Citizens-
hip awards were presented to Jo-
an Gertrude Williamson and Dor-
win Vail, by Past Comdr. John
Schmitt.

The gold award of the Haw-
thorne Rotary Club was present-
ed by President John Rotundo to
the following honor students:
Anna Marie Driscoll, Beverly Ann
Deverette, Elodie Theresa Dhan-
musa, Doris Jean Streelman and
Sharon Gertrude Williamson.

Also Harold H. Kuehler, Louise
Arline Goodenough, Marjorie
Ellen Downen, Rachel Koelbe,
Ernest R. Kuehler, Barbara Ann
Steinhilber, Albert Bus Jr., Ver-
onica Grunberg, Jean Elsie
Schmitt, Arthur Thomas Gioeli,
Harry Harold Van Hook and
Samuel Van Grown.

The presentation of the class
was made by Principal George J.
Geyer and the acceptance of the
class and the presentation of the
diplomas were made by President
Arnold-Daler.

The Rev. Paul E. Spinkner of
the Hawthorne Methodist Church
pronounced the Benediction and
the invocation.

Supervising Principal Stephen
Moshier presented the awards.

Local Man
(Continued from Page 1)

afternoon exercises.
The current graduating class,
which included 1975 candidates
for bachelors and 229 for
advanced degrees, is the second
group to be graduated this year.
At the exercises held last Febru-
ary, 1955 were awarded degrees
and diplomas.

It's ACME CHEESE WEEK

Pabst-ett Standard 19c
Special One Week Only!

Featured in all Acme Dairy Departments! Try Pabst-ett and crackers!
Crackers—Special for 1 Week! 1b. pkg. 23c

Educator Crax 23c
Asco Coffee 68c
Wincrest Coffee 66c
Ideal Coffee 73c
Tea 49c
Choc. Syrup 15c
Preserves 39c
Peanut Butter 39c

Cream-White SUPER-CREAMED 27c
SHORTENING 75c
Cider Vinegar 19c
Lake Shore Honey 10c
Salad Dressing 27c
Dill Pickles 27c
Stuffed Olives 29c
Tuna 39c
Del Monte Salmon 67c
Claridge Franks 43c

Pineapple Del Monte or Dole Sliced 29c
Special for 1 Week! 30-oz. can

Tuna Fish Etkimo Light Meat Flaked 25c
Libby's Tomato Juice One Week Only! 11c

7-Minute Complete Pie Mix 23c
Swift's Shortening 29c
Lifebuoy Health Soap 3 22c
Beech-Nut Baby Foods 10 93c
Ball Mason Jars 79c
Ideal Ball Fruit Jars 85c
Hormel SPAM 41c
Armour's Corned Beef 33c
Armour's TREET 39c
Swift's PREM 39c
PARD Dog Food 2 25c
Swift's Cleanser 12c

BAKERY
You're sure to enjoy the oven-fresh goodness of Acme's delicious top-quality bakery features!

Dixie Bar Cake 35c
Jelly Streusel Coffee Cake 25c
Danish Pecan Ring 35c
Cherry Streusel Pie 53c

Add ZEST to Your Menus

... a Gift to Your Budget!

JUNE IS DAIRY MONTH

... And What a Variety!
Serve fresh asparagus with cheese sauce, celery stuffed with cream cheese, apple pie with cheese, macaroni and cheese, or more economical, easily prepared, healthful cheese dishes now!

Mild Cheddar Cheese 45c
Bleu Cheese 65c
Swiss Cheese 65c
Grated Cheese 19c
Swiss Gruyere 35c
Glendale 87c
Cottage Cheese 15c

Colored Margarine 23c
Colored Margarine 32c

Legs & Rumps Veal 59c
You're sure to enjoy Acme's tasty milk-fed veal! A delightful change for week-end menus. At all Acme!

Prime Cut Rib Roast 69c
1st 6 ribs, 7-inch cut. Acme is famous for beef! Sav-U-Trim gives you more meat for your money!

Milk-Fed Rib Veal Chops 85c
Makes a quick, delicious meal! A welcome change for the family!

Fresh Ground Beef 53c
Lamb Liver 45c
Asco Sliced Bacon 59c
Holsum Sliced Bacon 45c
Midget Liverwurst 59c

Fresh Shrimp 69c
Featured at all Acme!

Frozen Foods
A great variety of all Acme!

Seabrook Farms
Broccoli Spears 29c
So tender, so delicious! Try a package!

Ideal Concentrated Orange Juice 2 47c
Each can makes 1 1/2 pints pure juice!

Dixiana Sliced Strawberries 43c
Large, luscious red ripe strawberries at their best!

Lings Farmdale Limas 23c
Peas 23c
Grape Juice 23c
Lemonade 23c
Tenda Steaks 98c

Open Fridays 'til 9 P.M.

Household Institute Breakfast Set \$3.19

FOR THE JUNE BRIDE...

Acme Markets

Acme Markets

Acme Markets

Acme Markets

Acme Markets

Acme Markets

Acme Markets